

# Harbor Area MARC / MAFCA

Founded in 1957. Torrance, California.

## March 2013

The HarborLight Newsletter  
was awarded the **MARC  
Newsletter Award of Excellence**  
2009, 2010 and 2011



Daffy and Georgette presenting award to  
2012 Woman of the Year **Elaine Pisu**



2012 Man of the Year **Jack Gordinier**

### Tours

Elaine has arranged for a local car collection tour on **Sunday, March 10th**. Meet at SNAX (Anza and Sepulveda) at 8:30AM for breakfast. Will leave at 9:30 for tour. When you go on the tours and take pictures, send your good ones to the editor and he will try and fit them in the *HarborLight*. Stay tuned. More tours are being planned. . .

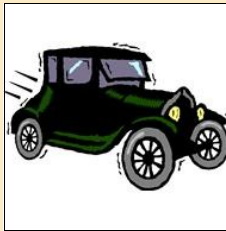


### Technical, Looking Ahead



Our new Technical Director, **Jim Speights** is looking for some projects for the club. They could include rebuilding Model A parts, installing new up-grades in your car, or just tuning up the 'ol Model A. Give Jim a call with your ideas.

### Upcoming Business Meetings



The February business meeting is at the at Waleria Clubhouse 7:30PM on **Friday, February 22nd**.

The March meeting will be **March 29th**. Let's start off the new year with good attendance and lots of enthusiasm. See you there!

### Next Board Meeting



The next board meeting will be the **El Segundo Driving Museum** on **Tuesday, March 5th** at 7PM. We'll discuss current status and future events.

All members welcome.

Our awesome website is up and running!

Visit it at:

[www.HarborAreaModelAClub.com](http://www.HarborAreaModelAClub.com)

inside...

- 2 Monty's Message
- 2 Installation Banquet pics
- 2 Editor's Corner - Birthdays
- 4 Sunshine Status - Teddy Marshall
- 4 Local car gatherings
- 5 January meeting notes
- 6 Member and Roster Info
- 7 Tech Talk - Fuel Shut-off

- 7 The Red Book & Fashion Ties
- 8 Wheels & Deals
- 8 Mystery Man
- 9 Future Events of Interest
- 9 MARC driving awards program
- 10-11 Our Advertising Friends
- 12 Officer List & Mailing Info



## Monty's Message A Note from our President Monty Bates



### Hard at Work Already... Ideas Wanted

What a year this is going to be!!! We are all rested and refreshed from the Holidays, the Awards Banquet is over and the months ahead are looking great for our Club. I want to personally thank everyone involved in making our Banquet such an enjoyable evening...

OK, maybe Jack wasn't that happy but the rest of us sure had a nice time.

Looks like our 2013 Tour Director, Ms. Elaine Pisu has March circled for a tour. I don't know all the details but we most certainly have fun. The big Model A Swap Meet is being held in San Diego this weekend, Lots of folks will attend trying to find that one "special" part needed. I know there are great parts waiting for me...hope it doesn't rain this year! The folks in Orange County have confirmed the annual Pancake Breakfast and Car Show is on schedule.

Our new Technical Director, Jim Speights, is already setting up technical seminars for us this coming year. Each time we get together I learn something new or get to participate in helping another member. The learning process continues. Let's help Jim with new ideas to facilitate upcoming seminars and remember my Tudor always needs help.

See careful out there... still lots of old people driving old cars

*Monty*

### Awards Banquet at the Proud Bird photos by Ellen Peterson

New Board (minus Secretary Yacklon)



Elaine Pisu and Monty

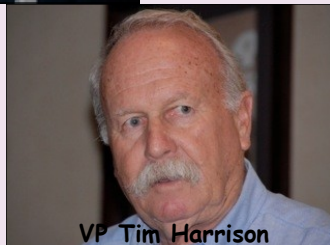


Georgette Avoian



Custom made centerpieces

VP Tim Harrison



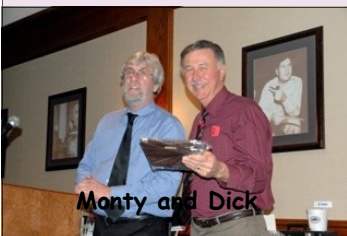
Pat, Jan and Liz



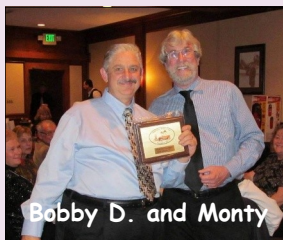
Welcoming Committee



Monty and Dick



Bobby D. and Monty



Daffy, Elaine (WOY) and Georgette



Dorothy Wood and Bill





## March Birthdays

- 8 Richard Parrish
- 12 Margret Gott
- 17 Ellen Peterson
- 21 Bill Gaugler
- 24 Jay Skinner
- 25 Diana Murphy
- 25 Jack Goldberg
- 28 Jim Perreten
- 31 Al Avoian



## March Anniversaries

- 7 Jan & Dick Wyckoff
- 7 Tim & Pat Harrison
- 10 Donnis & Monty Bates
- 20 Daffy & Art Wagner
- 24 Janice & Ted Dalton
- 31 Joy & Dave Pierson

### Editor's Corner by Dick Wyckoff

As we start the New Year's activities, let's support our Board and the extra effort they put in. There is a lot of background work done to make things happen. Board members, especially the Tour Director and the Technical Director are always looking for new ideas to make our activities more exciting. Volunteer for a tour or give a technical seminar. There are some great ideas out there waiting to happen!

Changing the subject a little, we editors are always looking for articles of interest to put in the newsletters. There must be some interesting Model A stories waiting to be told. For instance: How long have you had your car? Was it your first car? Have you driven it on some great journeys? Was it a family car? Did you restore it yourself? Do you have before and after pictures? Did you take a neat picture at a club event? Email them to me, or if you have photos, I can scan them and put them in the newsletter. Either way, let me know.

I have been encouraging new members of the Harbor club to receive the HarborLight by **email**. I am also asking existing members to do the same. Just let me know your current email address. It's that simple. The club saves a little more than one dollar each month per email subscriber. I have an email distribution now of 39 people from the Harbor Club and 34 others. This is more than \$800 per year savings, **AND** it is in **color**! You can print it out in B&W or color if you want, enlarge it, send it to your friends, or save it in your computer files. Again, just let me know your email address. If you want a sample email version, let me know also. I will send you one.

The newsletter is distributed to many other clubs locally and to other parts of the country. If you have an item for sale, let me know. I will put it in the '**Wheels and Deals**' section. Thanks . . .



### Last Notice. . . Dues are Due!

If you haven't renewed your "Harbor M.A.R.C." membership for 2013, please send a check for \$25, made out to Harbor M.A.R.C. (or bring it to the next business meeting).

Or, in case if you want to pay both the "Harbor M.A.R.C". and the "National M.A.R.C." memberships with only one check, send me a check made out to "Harbor MARC" for \$63. Then I will forward \$38 to the National M.A.R.C. Send to:

**Ursula Schmidt,  
26419 Pineknoll Ave.  
Harbor City, CA 90710.**



## Harbor 'Sunshine Status' by Doris Marshall

Pat Yacklon and Sue Hankins both came down with the flu at the same time. It hit so hard, they missed the Banquet for the first time. They are on the mend and feeling much better.



### Monday Meal at the Deli

Billy's is the place to eat on **Mondays**. Club members have enjoyed the menu at Billy's for a while now and the staff treats us well. Located at 5160 W. 190th St, Torrance CA. (Near the corner of Anza and 190th). Come by and check it out. 5PM is a good time. A back room is ours for as long as we want.

### Saturday Morning Coffee Gathering

If you are looking for a little tire-kicking adventure on **Saturday** mornings between 7 and 9AM, check out the Caffeine Cruisers at the corner of Artesia Blvd. and Hawthorne, in Torrance, CA. Several of the Harbor Model A club members and other car enthusiasts of all car types meet to talk cars. There are some very nice autos and some nice people there, too! The address is 17400 Hawthorne Blvd., Torrance CA. Come on by, have a cup of Starbucks, and get your weekend started in true So. California style.



## Passing of Ted Marshall

After a long fight with Lou Gehrig's Disease, **Teddy Marshall**, son of Doris and Drain Marshall, passed away on February 5th. He was 54 years old and has been fighting the disease for quite some time. He leaves a wife Noelle, a son Mike, and a daughter Mandy. He was an electrician for 25 years for the movie studios until he could no longer work.

In the picture, Teddy attended the 50th Anniversary Harbor picnic in 2007 with Doris and Drain.

Rest in Peace, Teddy. You fought a good battle.





## **Business / Board Minutes**

January Board and Business meeting was the Banquet

### **HARBOR MARC/MAFCA INSTALLATION BANQUET**

**Date: January 26, 2013**

**Location: Proud Bird Restaurant, Westchester CA**

After a nice dinner, President **Monty Bates** recognized club participation:

Most important: No accidents again this past year!

Thanks to VP **Tim Harrison** for the nice raffle, there were 42 raffle items.

Thanks also to **Phyllis DeCrescenzo** and crew for the centerpieces.

Special thanks to **Daffy Wagner** for all her hard work as Treasurer.

Many thanks to **Elaine Pisu** for job well done as Tour Director, and to **Pat & Sue** for photos, website and club Secretary.

Thanks to **Dick Wyckoff** as Harbor Light editor, **Drain Marshall** as Technical Director, **Jack Gordinier** as Sgt-At-Arms, and **Joan G.** for official Time Manager.

Thanks also to **Georgette** for refreshments and coffee all year.

Thanks to **Doris** for Sunshine Chairman, **Ursi** for Membership and **Dick Lusk** for Safety.

Well done to **Bobby D.** as Tools Manager all year with Advertising & Public Relations handled by **Bill Newell**.

The **Bill Younkin Award** for Participation was presented to **Drain Marshall**.

Annual Safety Awards certificates were handed out.

**Woman of the Year for 2012: Elaine Pisu. Congratulations!**

**Man of the Year for 2012: Jack Gordinier. Congratulations!**

We have two new people on the Board: **Jim Speights** is Technical Director and **Amy Knott** for Ads.

Can-Do and Secretary certificate presented to **Jan Wyckoff** for filling in for Pat several times.

We had 23 tours / events last year. Roadrunner and Safety checks went to: Bobby D. 500 miles; Bates 725; Pat & Sue 775; Knotts and Dick Lusk 825; 950 Harrisons; Jack & Joan 1075; Wyckoffs 1375 and 1175; Avoian 1600; Wagners 1750; and Doris and Drain Marshall 3320 & 2995.

We have 64 club members with 130 individuals.

10 still need to pay dues.

Participation Awards went to **Doris** and **Drain Marshall** with 30 of 37 events

Centerpieces were given to those who had a sticker under their chair.

Respectfully submitted:

Jan Wyckoff, Acting Secretary for Pat Yacklon



## 2013 Membership, Roster and Club Items: by Ursula Schmidt

The Harbor phonebooks/rosters are available at all get-togethers. The first booklet is free to members. Additional copies are \$2. They are also available free of charge through e-mail. Club members that don't attend events can request a phonebook/roster by mail. Contact **Ursi Schmidt** at 310-539-5391.

**Just a note:** We regularly update the roster. If you have any address changes, phone number changes or email changes, let Ursi know.

Also available are embroidered ball caps with the club's logo. Available in many colors \$15. There are club T-shirts, pins, and 50th anniversary cookbooks still available, too. Please call **Jan Wyckoff** at 310-322-8863 to place your order.



## A Little Help from My Friends

**Al Avoian** has a project that has been on the back burner for a long time. He has a late '31 AA Flat Bed truck that needs to be assembled. Over time, several members have done little things like get the engine going, providing parts and generally preparing to get this project on the road again. The most recent effort was to fit-check the cab on the frame. About nine members assembled to figure this puzzle out. Trucks are the same as cars, only different. They are obviously bigger, heavier, and a little tougher to navigate around when working on them. Anyway, after we located the body blocks, shims and body bolts, we did figure out the puzzle and mated the cab to the frame. We will take it apart again and do the cab's electrical and fuel line assembly. It is grunt work, but, hey, somebody has to do it! You gotta love this stuff, right?



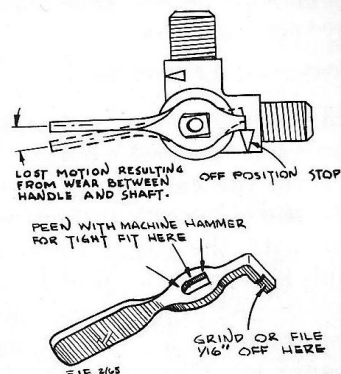
## Technical Talk

### *Gas Tank Shut-off Valve*

If you're plagued with a leaking carburetor on your Model A, chances are that the gas tank shut-off valve isn't closing completely when turned to the off position. This trouble is usually the result of a loose fitting handle rather than a faulty valve core. Check the shut-off handle for lost motion. A loose handle means that there is not a full 90 degree turn of the valve between stops, consequently there is not a complete shut-off of gasoline.

Remove the handle and inspect both the squared shaft and the slot in the handle for wear. Using a machine hammer, peen the edges of the slot until there is a tight fit between the handle and the squared shaft. Next grind approximately 1/16" off the handle at the point that makes contact with the off position stop lug.

Reassemble the handle on the valve.  
By Ed Eaton, Winston-Salem, N. C.



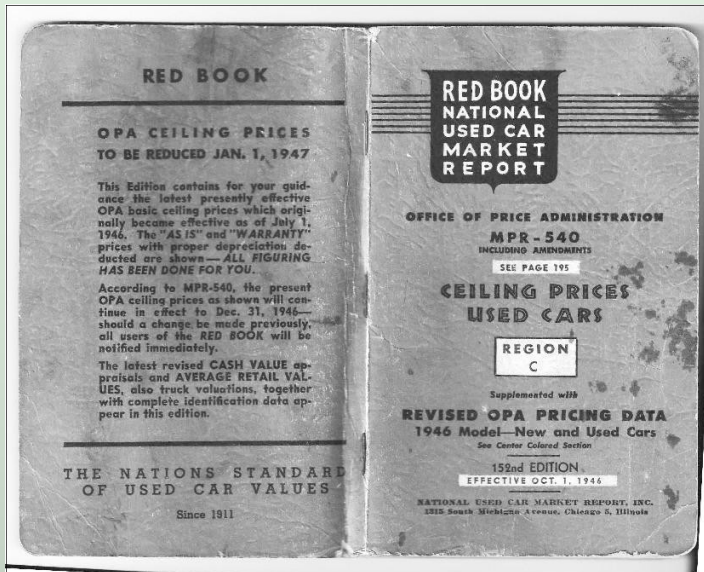
From November/December 1965 Model A News



## A Look Back a Few Years. . . . .

At a garage sale a few weeks back, Dick Wyckoff was leafing through an unusual find. It was a 'Red Book National Used Car Market Report' dated October 3, 1946. It gave the going prices for used cars. It is like the 'Kelly Blue Book' used today. It included the usual cars seen today and several not in production any more, such as Hudson, Studebaker, Austin, Terraplane, Packard, LaSalle, and Graham. Further inspection found a section of the small book listing going prices for "old-obsolete-inactive models". In that section was the going price for a Model A Ford. Below is a copy of the page.

Remember, this was in 1946, only 15 years after the Model A was discontinued.



Note that the Model A cash value was \$70, and the retail price was \$105.

| 190 OLD—OBSOLETE—INACTIVE MODELS—Cont'd  |       |                     |               |  |                               |                   |           |      |  |
|--|-------|---------------------|---------------|--|-------------------------------|-------------------|-----------|------|--|
| Year   | Model | Motor Cyls. B. & S. | S.A.E.        | Range of Serial Numbers  | Wt. Av. Factory 5-Pass. Price | Cash Retail Value | Av. Value |      |  |
| <b>DE SOTO:</b> Serial Nos.: On dash right below windshield. On right front door hinge pillar post.          |       |                     |               |  |                               |                   |           |      |  |
| 1931   | CP    | 8                   | 2 1/2 x 4 1/4 | 26.45 (11723R to 11853PH) (2001213 to 2009300)                     | \$995                         | 2965              | \$50      | \$75 |  |
| 1932   | CK    | 6                   | 3 1/4 x 4 1/4 | 23.44 5006933 to 5011800   | 875                           | 2705              | 60        | 90   |  |
| 1932   | SA    | 6                   | 3 1/4 x 4 1/4 | 25.35 5030807 to 5040200   | 775                           | 2695              | 75        | 115  |  |
| 1932   | CP    | 8                   | 2 1/2 x 4 1/4 | 26.45 6001889 to 6004021   | 995                           | 3025              | 75        | 115  |  |
| 1933   | SD    | 6                   | 3 1/4 x 4 1/4 | 25.35 5056001 to 5068056   | 735                           | 3060              | 100       | 150  |  |
| 1934   | SE    | 6                   | 3 1/4 x 4 1/4 | 27.34 5068501 to 5082105   | 995                           | 3378              | 125       | 188  |  |
| <b>DODGE BROTHERS:</b> Serial Nos.: Toeboard, right side, cross member under floor board, and toeboard left. |       |                     |               |  |                               |                   |           |      |  |
| 1931   | DC    | 8                   | 2 1/2 x 4 1/4 | 26.45 (4501084 to 4504533) (E191HS to E192EL) (3504180 to 3516105) | 1045                          | 3043              | 50        | 75   |  |
| 1931   | DD    | 6                   | 3 1/4 x 4 1/4 | 23.44 (D255CW to D257PH)   | 765                           | 2668              | 50        | 75   |  |
| 1932   | DC    | 8                   | 2 1/2 x 4 1/4 | 26.45 4504534 to 4505165   | 1045                          | 3043              | 70        | 105  |  |
| 1932   | DD    | 6                   | 3 1/4 x 4 1/4 | 23.44 3516106 to 3516115   | 765                           | 2668              | 70        | 105  |  |
| 1933   | DP    | 6                   | 2 1/2 x 4 1/4 | 23.44 3579001 to 3594421   | 670                           | 2632              | 100       | 150  |  |
| 1933   | DO    | 8                   | 3 1/4 x 4 1/4 | 33.8 4527001 to 4528101  | 1145                          | 3580              | 100       | 150  |  |
| 1934   | DR    | 6                   | 3 1/4 x 4 1/4 | 25.35 3580001 to 3756367   | 765                           | 2940              | 125       | 188  |  |
| 1934   | DRXX  | 6                   | 3 1/4 x 4 1/4 | 25.35 4000001 to 4015004   | 745                           | 2940              | 125       | 188  |  |
| <b>FORD:</b> Serial Nos.: Left side of cylinder box.   |       |                     |               |  |                               |                   |           |      |  |
| 1931   | A     | 4                   | 3 1/2 x 4 1/4 | 24.03 3900000 to 5000000   | 590                           | 2462              | 70        | 105  |  |
| 1932   | A     | 4                   | 3 1/2 x 4 1/4 | 24.03 AB-3000001 to 5175514  | 540                           | 2388              | 80        | 120  |  |
| 1932   | A     | 8                   | 3 1/2 x 3 3/4 | 30.01 18-1 to 203126 Appt.   | 590                           | 2524              | 80        | 120  |  |
| 1932   | 4-40  | 4                   | 3 1/2 x 4 1/4 | 24.03 5168001 to 5185948   | 510                           | 2465              | 100       | 150  |  |
| 1933   | 8-40  | 8                   | 3 1/2 x 3 3/4 | 30.01 18-203127 to 457447  | 590                           | 2590              | 100       | 150  |  |
| 1934   | 40    | 8                   | 3 1/2 x 3 3/4 | 30.01 18-457478 to 1234566   | 575                           | 2590              | 125       | 188  |  |
| 1934   | 40    | 8                   | 3 1/2 x 3 3/4 | 30.01 18-457478 to 1234566   | 615                           | 2590              | 125       | 188  |  |
| <b>FRANKLIN—Discontinued:</b> Serial Nos.: Gas tank bracket, left. On dash under hood.                       |       |                     |               |  |                               |                   |           |      |  |

### Only in This Stupid World

.....do drugstores make the sick walk all the way to the back of the Store to get their prescriptions while healthy people can buy cigarettes at the front.

### Only in This Stupid World

.....do people order double cheeseburgers, large fries, and a diet coke.

### Only in This Stupid World

.....do banks leave vault doors open and then chain the pens to the counters..

### Only in This Stupid World

.....do we leave cars worth thousands of dollars in the driveway and put  
Our useless junk in the garage.

Only in This Stupid World .....do we buy hot dogs in packages of ten and buns in  
Packages of eight.

Only in This Stupid World .....do they have drive-up ATM machines with Braille lettering



## *Wheels & Deals:*

### For Sale:

- **Model A Police head** (the one with the cast in "B"), two available, one milled down to remove recess above piston (has a couple of cracks, \$150) and the other milled about half that much (\$200), **four 19 inch rims**, \$20 each or 4 for \$60, Charlie Stephens, [CharlesDStephens@sbcglobal.net](mailto:CharlesDStephens@sbcglobal.net), (310) 837-2950. Can send pictures or arrange to meet at swap meet or ??.
- Accessory **Otwell Health Heater** for Model A. It's in good shape, \$100. Call Jim. His cell is 310-466-1122 for info.



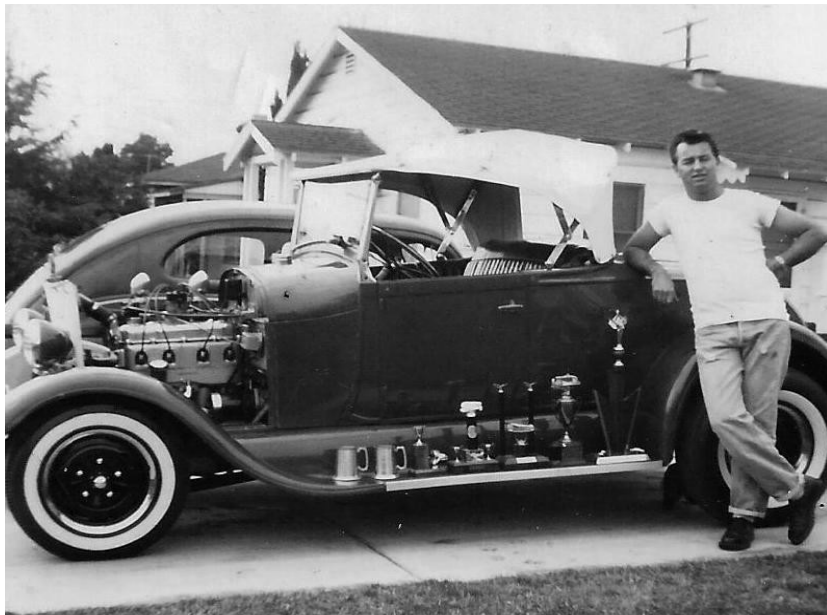
### Wanted:

- **1928 Ford project coupe.** 1929 is my second choice. It does not have to be complete. I will find the missing parts.  
Jay Skinner (562) 426-5478 Long Beach
- **Used Christmas and greeting cards.** (Complete cards please). We will recycle them.  
Ursi (310) 539-5391 and Doris (310) 378-5061.



## *Thank You for your support*

Just a word of thanks to long time member, George Manzo, for his generous donation to the club. George and Laura are some of the most senior members of the club. They make donations to help us with our mission to further educate people about our wonderful Model A Fords. Thank you again for your support.



### Who is this Guy?

It shouldn't be too hard to figure out who this is. He still has this roadster and we see it on a regular basis.

The car was a weekly entrant at the local drag racing tracks in the late fifties and sixties. His claim to fame was driving one of his creations to 107 MPH in the quarter mile with a highly modified four-banger.

Picture taken about 1957.

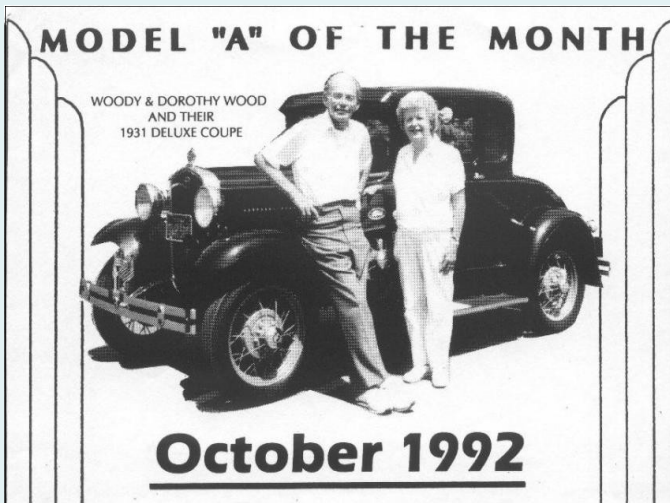
Hint: The car is now red . . . .



## **Lots of Car Events of Interest for 2013**

- February 22-24 (Fri-Sun) **San Diego swap meet** at Qualcomm Stadium. Friday, gates open to public at noon. Sat and Sun, gates open at 8AM. Admission is free. Parking is \$10. Great event.
- March 21-24 (Thu-Sun) **Laughlin (Las Vegas) Meet.** Las Vegas MAFC. Contact Mark Schieff 702-592-1368 To include a Hoover Dam tour. Fun event.
- April 5-7 (Fri-Sun) **CCRG Jamboree.** Hosted by the Charter Oak As in Visalia CA. Headquarters is the Lamp Liter Inn, 3300 W. Mineral King Ave., Visalia 800-662-6692.
- April 11-13 (Thu -Sat) **HCCA Swap Meet** in Bakersfield. At fair grounds. Ming St. off-ramp about a mile east.
- April 28 (Sun) **Orange County Pancake breakfast.** Hart Park in Orange. More info later.
- May 24-27 (Fri-Sun) **NCRG Pleasanton CA** sponsored by the Acorn As.
- July 26-28 (Fri-Sun) **Wings 'n Wheels** in Solvang. Save the date. Fun weekend.
- September 14th (Sat) **11th Annual All Ford Car Show** and Swap Meet in Old Town Orcutt, more info to follow.
- October 12th (Sat) **The 3rd Annual Model A Ford Roundup** hosted by the Santa Maria Chapter. We will have a Santa Maria Style BBQ, Car Games, and a raffle. Price \$5 per head. Please come. A good time will be had by all. More details to follow.

### **The Driving Awards Program**



The **Driving Awards Program** within MARC does track miles driven for those Regions (Clubs) and individuals participating in the Program.

Mileage driven is tracked by end of year reporting of the odometer reading as of Dec 31 each year. When award level are reached, from odometer reading at date of registering a car in the program, I mail the appropriate mile recognition to the Region (Club) for presentation.

The award levels are 2,000 miles driven from registration, then 5,000 miles and every 5,000 miles after that,

Within the MARC Driving Awards Standards, under paragraph 3A. All ground mileage is credited, except non-emergency tow.

3B All credited mileage is cumulative from year to year, and to each higher award level,

3C Mileage to be credited must be attested.

3D No mileage is credited for any period of time that the owner is not a member of MARC.

3E Mileage does not have to be updated every year to maintain eligibility.

3F Mileage is accumulated through the reporting of the ODOMETER reading as of December 31, of each year.

Mileage toward awards in the Program are miles the Model A is driven.

A Model A should be driven to receive any kind recognition.

A car is not recognized for miles driven when it's being pulled in a trailer by a SUV.

Bob Barker  
MARC Driving Awards Chairman .

## **TORRANCE TRANSMISSION SERVICE**

**ERIC BAILEY**

Phone: (310) 378-9217

24009 S. Hawthorne Blvd.  
Torrance, CA 90505



## **KAREN'S GIRL TALK**

16803 South Prairie Avenue  
Lawndale, CA 90260

Phone: (310) 370-2916

All Beauty Services  
by Karen



**Patricia Tucker**  
formerly Patricia's Doll House  
Stuffed Toy & Doll Repairs  
(310) 835-2687

[lotsadolls@ca.rr.com](mailto:lotsadolls@ca.rr.com)

## **ARIZONA MODEL A, L.L.C.**

- NEW PARTS
- USED PARTS
- SERVICE
- RESTORATION
- HOURS: TUES-FRI 9-12, 1-5  
SAT & EVES BY APPOINTMENT



**SAMUEL P. GUTHRIE**

15838 S. GILBERT RD., CHANDLER, AZ 85225  
(480) 782-0266

Awards • Plaques  
Medals • Ribbons  
Laser • Engraving



**A&E TROPHIES AND ENGRAVING**  
24519 Narbonne Ave. Lomita, CA 90717

SANDRA HEIN

Ph: (310) 539-1033  
Fax: (310) 539-9970

## **Mike's "A" Ford-able Parts**

**Mike Butcher**



124 Model A Drive, Maysville, GA 30558  
email: [mike@mikes-afordable.com](mailto:mike@mikes-afordable.com) - [www.mikes-afordable.com](http://www.mikes-afordable.com)  
Fax: 706 652 2492 - Phone: 706 652 3866  
1 888 TRY MIKE (879 6453)



Specialising in 1928 - 1931 Model A Ford Parts



**RYAN'S HARDWOOD  
FLOORING**

Lic # 843173

### **CUSTOM INSTALLATIONS**

PREFINISHED  
UNFINISHED  
ENGINEERED  
CUSTOM DYES & STAINING  
HAND DISTRESSING  
TRIM & BASE MOLDINGS

REFINISHING & REPAIRS  
INLAYS  
BORDERS  
MEDALLIONS  
CUSTOM FURNITURE  
**(310) 722-3348**



222 West 8th Street • San Pedro, CA 90731 • Tel 310.707.2207



**Antonio y Maria  
Velazquez**

Tel: (310) 326 - 7635  
Fax: (310) 326 - 4468  
email: [avelaz1036@aol.com](mailto:avelaz1036@aol.com)  
[www.firstclassembroidery.com](http://www.firstclassembroidery.com)

**LUIS LOYOLA**

Certified  
LeBaron-Bonney  
Installer

310-322-8789

**Loyola Auto Interiors**


CONVERTIBLE TOPS • UPHOLSTERY

212 EUCALYPTUS DR. • EL SEGUNDO, CA 90245  
[la1212@sbcglobal.net](mailto:la1212@sbcglobal.net) • [www.loyolaautointeriors.com](http://www.loyolaautointeriors.com)

The *HarborLight* is a monthly publication for the Harbor Area MARC/MAFCA. All articles or want ads must be received by the 15th of each month in order to appear in the following month's publication. Neither the *HarborLight* and its staff, nor the Harbor Region of the Model A Restorer's Club Inc. and Model A Ford Club of America, Inc. will assume any liability for errors or omissions, or for any liability or resultant damages for products, opinions or services listed herein. Some information contained in our newsletter has been reprinted from other newsletters; we thank and acknowledge them. Editor



**SNAX**  
Home of the original **SUPER BURGER**



30 YEARS SERVING YOUR  
BREAKFAST AND BURGERS

4535 Sepulveda Blvd.  
Torrance, CA 90505

Tel: (310) 316-6631

**EARLY FORD STORE**  
of California  
www.earlyfordstore.com

Specializing in Rare Parts  
and Accessories for  
Early Fords 1928/1972  
Passenger Car & Pick-Up

**Bill McGrath**  
San Dimas, CA 91773  
108 W. Bonita Ave.  
Tel: (909) 305-1955  
Fax: (909) 305-1953



Proud printer of the HarborLight

**STUDIO PRINTING**

446 Main Street  
El Segundo, CA 90245

Edward Su  
ed@studioprinting.net  
www.studioprinting.net

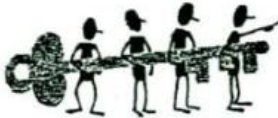
310-333-8989  
fax 310-333-8986  
cell 310-292-3219

**VELLIOS**



**AUTOMOTIVE MACHINE SHOP**  
4625 Manhattan Beach Blvd.  
Lawndale, CA 90260  
**(310) 643-8540**

Lic#496791



**INDUSTRIAL LOCK and SECURITY**

COMMERCIAL • RESIDENTIAL • AUTO  
LOCKS SERVICED & INSTALLED  
KEYS MADE • SAFES • ACCESS CONTROL  
BONDED & INSURED

24 hr. EMERGENCY SERVICE  
401 Main Street  
El Segundo, CA 90245  
FAX (310) 322-3627  
(310) 322-3252

**ELYSE BEARDSLEY**

**BRATTONS ANTIQUE AUTO PARTS**



1606 BACK ACRE CIRCLE  
MOUNT AIRY, MD 21771  
Order # **800 255-1929**  
Web: **brattons.com**

FREE 194 page illustrated MODEL A parts catalog  
Catalog contains 3,200 Model A parts with full  
descriptions and Picture of each part.  
Supplying Quality by using over 90% U.S. parts  
Serving the Model A restorer with parts since 1977

**M B RENTALS**  
Studio Equipment  
Lights and Fixtures



**Drain Marshall**  
Home: (310) 378-5061  
Cell: (310) 612-3361

Vintage and Classic Car  
**Mohr's**  
Upholstery & Restorations

Specialty in Diamond Tufting  
Rag Tops  
mohrscarrestoration@yahoo.com

Off: 626-969-1607  
Bill 626-484-7476  
Chris 626-428-4935  
228 S. Motor Ave., Azusa, CA 91702

**Ford**  
**H & H**  
Antique Ford Engine Rebuilding  
Max Herman

4451 Ramsdell Avenue  
La Crescenta, CA 91214  
www.handhantique.com

Tel: (818) 248-2347  
Fax: (818) 248-0161

**PEPBOYS AUTO**  
Parts, Service and So Much More



NEED A TOW?  
800-PEP-BOYS

3124 Sepulveda Boulevard  
Torrance, CA 90505 • (310) 326-3002  
Fax: (310) 326-2007 • Store #658  
e-mail: mngr0658@pepboys.com





For MARC info and membership, see  
[www.ModelARestorers.org](http://www.ModelARestorers.org)



For MAFCA info and membership, see  
[www.MAFCA.com](http://www.MAFCA.com)

The Harbor Area A's meet monthly on the last Friday of every month at the Walteria Park Clubhouse, located at 3855 W. 242nd St. in Torrance, California. Meetings begin at 7:30 PM (The park is located about 1-1/2 blocks west of Hawthorne Blvd. and one block south of Pacific Coast Hwy.) We'd like to invite all interested parties, even if they don't own a Model A Ford, to come and join us. Our goal is to educate the public about Model A Fords and have fun while doing it.

#### 2012 Board of Directors:

##### President:

Montelle Bates III (310) 516-0468

Email: [BatesX3@aol.com](mailto:BatesX3@aol.com)

##### Vice-President:

Tim Harrison (310) 318-5920

##### Treasurer:

Daffy Wagner (310) 374-6113

##### Secretary:

Pat Yacklon (310) 782-0082

##### Tour Director:

Elaine Pisu (310) 793-1789

##### Technical Director:

Jim Speights (310) 675-2243

#### Appointed Officers:

##### Membership:

Ursula Schmidt (310) 539-5391

##### Historian:

Sue Hankins (310) 782-0082

##### Sunshine Secretary:

Doris Marshall (310) 378-5061

##### Advertising:

Amy Knott (310) 327-6559

##### Refreshments Coordinator:

Georgette Avoian (310) 371-5732

##### Tools:

Bob De Crescenzo (310) 540-3690

#### Appointed Officers:

##### Merchandise:

Jan Wyckoff (310) 322-8863

##### Sergeant-at-Arms:

Jack Gordinier (310) 328-7333

##### Webmaster:

Sue Hankins (310) 782-0082

[www.HarborAreaModelAClub.com](http://www.HarborAreaModelAClub.com)

##### HarborLight Editor:

Dick Wyckoff

337 Lomita St

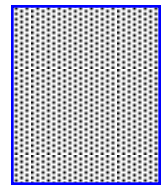
El Segundo Ca 90245

Phone: (310) 322-8863

E-mail: [Janndick@earthlink.net](mailto:Janndick@earthlink.net)



# *The HarborLight*



Harbor Area MARC/MAFCA  
Dick Wyckoff, Editor  
337 Lomita St.  
El Segundo CA 90245

*March 2013*



Al Avoian and Jack Goldberg  
Have trucks similar to this.

