

Harbor Area Model 'A' Club

Dedicated to preserving and driving the 1928-1931 Model 'A' Ford since 1957
Torrance, California

July 2017



Harbor A's
visiting
Little Sisters
of the Poor
assisted living
facility in San
Pedro, CA

HARBORLIGHT



inside...

Tours



Put July 14-16 on your calendar. That's our Solvang 'Drive 'n Dine' weekend. Some of us are driving up on Thursday and doing a little self exploration.

Lots of swap meets and car shows in August. Check the tour article for details.

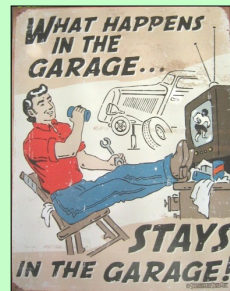
Upcoming Business Meetings

The next club meeting will be **Friday, June 30th**, 7:30pm at the Waltheria Clubhouse.

The **July** meeting will be **Friday, July 28th**.

Come a little early and help set up. Meet and greet your Model A friends! See you there!

Technical Activities



Steve Thompson got his Phaeton engine back from Vallios. Working on running gear before engine installation.

This is at Al's Garage. Come on by each Saturday morning 10-12 and check it out!

Next Board Meeting

The July Board meeting is **Tuesday, July 11th, 2017** at 7PM. It will be at the Toyota Auto Museum, 19600 Van Ness Ave., Torrance Ca

We will be planning upcoming events. All are welcome.



Please visit our awesome website
Check it out:

www.HarborAreaModelAClub.com

- 2 Monty's Team Talk
- 3 Birthdays/Anniversaries-Editor's Corner
- 4 Club merchandise / For Sale
- 4 Local car gatherings
- 5 Business meeting notes
- 6 Tech Talk — Electrical grounding
- 7 Local car events

- 7 Touring with Elaine
- 8 National news—MAFFI, MAFCA
- 9 Fashion and history
- 10 Al's Garage— Work in progress
- 10-11 Our Advertising Friends
- 12 Officer List & Mailing Info



Monty's Team Talk A Note from our President Monty Bates



HAPPY BIRTHDAY AMERICA!!

We live in the greatest nation on Earth and sometimes we forget just how fortunate we are. We are a young nation, a nation with a history that goes back thousands of years...we are not the first Americans, not by a long shot. We come from every nation on Earth and we are like no other. Native inhabitants were here when the Vikings came, they watched the ships as they came from Europe with people seeking freedoms. We brought the black man, bowed down by whips & chains, we took the red man's land, gold & oil and pushed from sea to sea. We fought a great war to keep us as one nation, joined other nations to defend our way of life. We just kept coming. We came from all the lands on Earth...I am, you are, we are Americans! Let us now pause and give thanks for all we have and understand the world still sees the beacon of light, the promise of freedoms and new life for the next generations. I am proud to be an American and for having the honor to be of service to our country and the Harbor Area Model A Ford Club.

Please don't forget to bring me your cans & bottles each Monday night at Hof's Hut, or at any of our meetings or tours. I had a fantastic time at the Henry Ford picnic and look forward to our next big event in Solvang.

Be safe out there!

Monty



At Ruby's Diner last week, Elaine Pisu surprised Mirco with an original '35 Dodge that he admired a while back. We made it a Model A night with 13 cars and 40 people. The trophy is for Best of Show for that night.



July Birthdays

- 1 Doris Marshall
- 1 Steven Thompson
- 4 Bill Moore
- 10 Mike Wright
- 13 Mirco Pisu
- 18 Donnis Bates
- 20 Joe Freitag
- 25 Noralene Porper
- 27 Pat Harrison



July Anniversaries

- 2 Vince & Beverly Migliazzo
- 3 Mirco & Elaine Pisu
- 6 Jim & Dianne Runyon
- 9 Ron & Sandy Ragon
- 13 Jack & Joan Gordinier
- 23 Bob & Carol Olsen



Editor's Corner By Dick Wyckoff

Just got back from a fun visitation to the Little Sisters of the Poor assisted living facility in San Pedro, CA. The nuns contacted Elaine Pisu about a repeat of last year's visit. Ten Model A's put on a mini car show and took residents for rides. The folks just loved the adventure. 15 members got treated to lunch for their efforts. Fun time!

Things are moving along with Steve Thompson's '31 Deluxe Phaeton. We're checking all the mechanicals and getting ready to reinstall the rebuilt engine. Still some work to do, but making progress.

A little update on my wife, Jan. She is attending pulmonary exercise classes to strengthen her heart and lungs. She is feeling much better and is looking forward to Solvang.

Just installed four new Goodyear tires on the Cabriolet. The odometer just turned 70K. We have driven it 16K miles since the restoration 10 years ago. Keep driving those Model As!

Dick



Annual Henry Ford Picnic

Harbor was well represented at the Diamond Tread Chapter's Henry Ford Picnic in Santa Fe Springs this last Sunday. We had 25 members, 6 Model As and 5 moderns. The BBQ was delicious as usual and no one went away hungry. Our club members did very well in the raffle winning at least 20 prizes. Pat Harrison was a big winner by winning 1/3 of the money raffle. Jim and Dianne Runyon received the People's Choice 2nd place trophy for their beautiful Roadster Pickup. It was about 94 degrees, but we all had a great time .



Saturday Morning Coffee Gathering

If you are looking for a little tire-kicking adventure on **Saturday** mornings between 7 and 9AM, check out the Caffeine Cruisers at the corner of Artesia Blvd. and Hawthorne, in Torrance, CA. Several of the Harbor Model A club members and other car enthusiasts of all car types meet to talk cars. There are some very nice autos and some nice people there, too! The address is 17400 Hawthorne Blvd., Torrance CA. Come on by, have a cup of Starbucks, and get your weekend started in true So. California style.



Monday Supper at Hof's Hut

We have been meeting for dinner on Monday at Hof's Hut on 237th and Crenshaw for a while now. The food is good and the staff takes good care of us. Come on by and join in the festivities. Time: about 5PM.



"Cruise at the Beach" Friday afternoon at Ruby's Diner

Ruby's Diner 245 N. Harbor Drive in Redondo Beach (by the pier) will host a weekly gathering of fun cars all summer long. This event brings many cars of all types. Classics, Concours, hot rods, antiques, sports cars, motorcycles, and Model As. Many Harbor Club members show their cars and enjoy a great meal in the diner. Check it out. Times are about **3:30 to 7:00 PM every Friday**. There is a nice drawing and trophies are awarded each week.



Parking is free to participating cars.

This event will continue all summer until October 27th, 2017
Hope to see you there.

2017 Membership, Roster and Club Items:

Gloria and Jim have a selection of new Club merchandise. We have hats, shirts, patches, t-shirts and we have added 60th anniversary items. More to come.

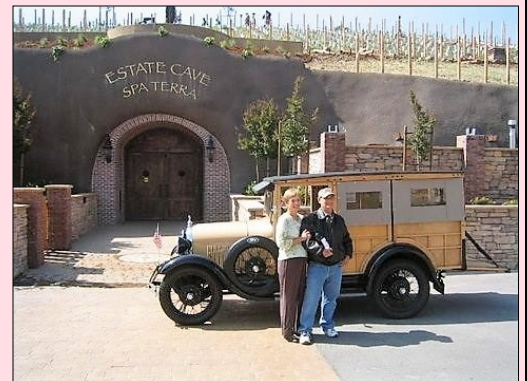
The **2017 Harbor phonebooks/rosters** is available at all get-togethers. The first booklet is free to members. Additional copies are \$1.50 They are also available free of charge through e-mail. Club members that don't attend events can request a phonebook/roster by mail. Contact **Ursi Schmidt** at 310-539-5391. Make sure Ursi has your latest info.

Just a note: We regularly update the roster. If you have any address changes, phone number changes or email changes, let Ursi know. Let Dick Wyckoff know, too.
He'll put the info in the **HarborLight**.



1929 Ford Woody Station Wagon

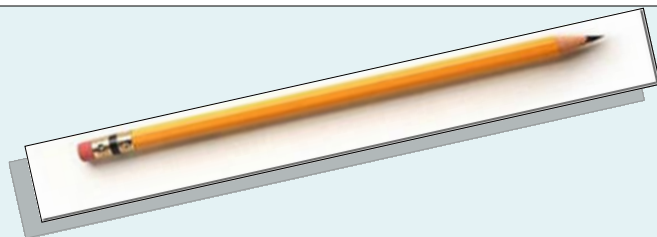
- LeBaron-Bonny windows and seats
- H & H inserted engine (~60 hp) with about 300 miles
- Rebuilt transmission
- Most of wood original (not kit wood)
- New heavy duty radiator, battery, tires (100 miles)
- Powder coated and balanced wheels
- Completely rebuilt brakes and front-end with new original spindles, bearings, ball joints
- Completely rebuilt no-leak water pump. Gas tank flushed and cleaned
- Completely rebuilt distributor, new electrical harness, rebuilt original horn
- Asking \$45,000 OBO. Contact Dan Fitzgerald (c) 310-344-2306
- Palos Verdes Estates CA



HARBOR AREA MODEL 'A' CLUB MEETING

Date: May 13th, 2017

Location: Pat Tucker's garage, Carson CA



President: Monty Bates called the meeting to order at 11:40AM

Recognition of Past Presidents: Dick Wyckoff, Doris & Drain Marshall, Tim Harrison & Monty Bates

Minutes of Previous Meeting: Dick Wyckoff moved that the Minutes be approved as printed in the HarborLight; the motion was seconded by Tim Harrison

Vice President: Tim Harrison ♦ Presented a beautiful custom plaque to Pat & Keith Tucker for hosting our safety check again this year.

Treasurer: Daffy Wagner ♦ All is well. Bills are paid.

HarborLight Editor: Dick Wyckoff. Don't forget to remember our Veterans on Memorial day.

Historian/Webmaster: Sue Hankins ♦ Welcome back to you and Pat

Membership: Ursi Schmidt ♦ Was not present - Our newest and youngest member, Lance Cryan joined us today for his first safety check experience.

Membership Drawing: No drawing today

Technical & Safety: Cliff LeFall ♦ We will be at Al's garage this coming Saturday. Currently we have several cars in residence. Lots of group participation, with donuts and coffee ♦ Bring your projects ♦

The address is 904 Van Ness Avenue, Torrance, CA.

Advertising: Jim Huizdos ♦ Currently working on give-a-ways for our picnic. We have ink pens, key chains and developing notepads.

June Birthdays and Anniversaries: We celebrated all the May birthdays with two cakes prepared by Weeg Thompson. We sang with gusto to all who were present. **Birthdays:** 1-Joan Young, 7-Joann Moore, 8-Michael Larquier, 13-Joan Gordinier & Larry Migliazzo, 14-Fran Earhart, 15-Frank Young, 21-Jim Huizdos, 23-Andy Soto & 24-Julia Duenes ♦ **Anniversaries:** 2-Frank & Joan Young, 4-Jeanne & Richard Parrish, 5-Dan & Liz Fitzgerald & Diana & Marty Murphy, 14-Kathy & Jim Valot, 22-Greg & Fran Earhart, 25-Willie & Darlene Duncan, 26-Cliff & Theresa LeFall & Ed & Julia Duenes

Tools Coordinator: Bobby DeCrescenzo ♦ We are doing fine, nothing new to report

Tours: Elaine Pisu & Co-Chair Jim Huizdos ♦ **May 21st, Sunday** - Muckenthaler Annual Car Show - We have the sign-up sheet please add your name if you plan on going. Meet at Harbor Freight at 8:00AM leave at 8:15AM ♦ **June 9th, Friday** - Harbor Area Model A's at Rubys. Let's all go to Rubys and bring our cars for a fun summer display! Elaine will go early and reserve spots for our club ♦ **June 25th, Sunday** - Henry Ford Picnic. Must self-order your lunch if you plan to go. Tim has the forms ♦ **July 14th - 16th** Solvang drive n' dine; there are additional sign-up sheets for the Orcutt events. See Elaine for these forms. Plus there is a sign-up sheet going around for the Solvang event. Please sign it if you plan to attend ♦ **August 20th, Sunday** - Wounded Warrior Car Show, Redondo Beach Performing Arts Center, 9AM - 3PM. Meet at Dennis Simpson's house. Time TBD.

Merchandise: Gloria Younkin ♦ Selling lots of Shirts.

Refreshments: Ruxella Speights - Thank you all for the food and help. Pat each other on the back and say well done. Thank you Weeg for the two delicious cakes.

Old Business: Fund Raising - Bottles & Aluminum Can drive (Ongoing). See Monty Bates with your contribution ♦ Our waitress at Hoff's Hut is having a baby. She was very helpful with our fund raising event and we would like to give her a gift for her new addition. Elaine has a card for you to sign if you would like to contribute.

New Business: None

Next General Meeting: Friday, June 30th same time same place (7:30PM @Walteria Clubhouse)

Next Board Meeting: Tuesday, June 6th (7:00pm at the Toyota facility)

Meeting adjourned: The meeting was adjourned at 12:00PM

Respectfully submitted; **Donnis Bates, Secretary**



Technical Talk

One of the many interesting subjects discussed at Al's Garage on Saturdays is electrical grounds on a Model A Ford. As a regular on Fordbarn.com, I came across the same subject there, also. Below is one of the more complete responses. Thought you might find it interesting. Ed.

MikeK

Senior Member



Join Date: May 2010
Location: Windy City
Posts: 2,650



What is the Primary Engine to Frame Ground Path?

On a stock Model A it is a **combination of the following**:

Front engine mount - Floats on a spring, always loose, not a solid electrical connection. If freshly painted a very poor high current path.

Rear engine mounts - Bolts through rubber with spacers, not a solid electrical connection. If freshly painted a poor high current path.

Fuel line - (gaspl!) - Electrical connection to tank/cowl/body that sits on blocks/pads with bolts that connect to frame. If frame is freshly painted a poor high current path. I've seen fuel lines get real hot from cranking if other paths on this list are missing.

Vacuum line - Electrical connection to firewall. Same problem as fuel line.

Drive train - Thru grease/oil and across machined surfaces, then thru rear spring, not a solid electrical connection.

Engine pans - Electrical connection to engine and frame. If freshly painted a poor high current path.

Metal popout switch cable (Yikes!) I've seen one get RED HOT when some items on this list were not in place!!

Brake rods - A loose assembly from pedal shaft to axles to springs to frame.

Throttle linkage - Not a solid electrical connection. Across loose lubricated moveable points.

This is why, on a non-fine point car, many people add a ground lead from a tranny bolt to the same frame bolt the battery ground strap attaches to.

Mechanical engineering 101: If you put an adjustment knob, screw, bolt, or tolerance specs on something, some people will immediately fiddle with it. If you mark it **DO NOT TOUCH**, everyone will mess with it.

Welcome to our New Members

The club welcomes new members #1060, **Wayne, Tomo, and Larry Sterling**. They live at 13215 Hindry Ave., Hawthorne CA 90250. Their phone number is 310-500-9933. Email address: WSterling@Sterling-Agency.com They have a 1930 Five window coupe. **Welcome!**



Touring with Elaine By Elaine Pisu, Tour Director



JUNE WAS FULL OF SURPRISES

June was a really fun month for Harbor Area Model Aers. We had a GREAT turnout at Ruby's Cruise In. 40 Members and friends had dinner and watched Mirco receive his early birthday present, a 1935 Dodge. Mirco was completely surprised thanks to Richard Tupper, Donnis Bates and Al Avoian helping me hide the car for over 6 weeks. This was a surprise that was a lot of fun, but one that I will never try to outdo. Just to top it off, Mirco's '35 Dodge got best of show. He was a happy guy!!

Thanks to everyone that participated in Kim & Joshua's baby shower. We gave them a crib, a high chair, a stroller and a car seat. In addition there was a card full of money so as you saw Kim was in tears. Kim has taken great care of us at Hof's Hut and we wish her and Joshua all the best with their upcoming bundle of joy



On Saturday, June 17th we went to Little Sisters of the Poor in San Pedro and had our annual car show. We took several residents and Sisters for rides in our cars and they were delighted. We were treated to a wonderful lunch which is always great. Thanks Mirco, Art & Daffy Wagner, Donnis & Monty Bates, Weeg & Steve Thompson, Al Avoian, Cliff LeFall, Dick and Jan Wyckoff, Jim Huizdos, Dennis Simpson, Steve & Mary Ann Freidrich & Tim Harrison.

On Sunday, June 25th we made our annual trip to the Henry Ford Picnic hosted by The Diamond Tread Model A Club. They always do a great job and the raffle never disappoints. Thanks Diamond Treads!!

On July 14th - July 16th we will be going to Solvang. We will be attending the Bent Axles 37th annual car show in Orcutt on Saturday July 15th. Lots of antique stores are in Orcutt and I'm told there is a great quilt store. A fun time is sure to happen.

On Thursday, July 20th we will be participating in the **Rock Around the Block** car show in downtown Torrance hosted by the Historical Society. We will meet at the corner of Post & Arlington near the Gordinier's home. We want to meet ahead of time so that we can all park together. We will meet at 3:15 and leave at 3:30. If you can't get there before 4 you may have trouble parking together but none the less you can participate. The show will run from 5-8. Of course we will plan on finding a place to eat.

Sunday, August 20th we will be participating in the Wounded Warrior Car Show that benefits the Semper Fi Fund. If you sign up before July 21st it is \$35 and day of the event it will be \$40. We will be meeting at Dennis & Linda Simpson's home at 7:30 AM and Leave by 8:30. Linda and Dennis will be offering donuts & coffee.

Sunday, September 17th— Harbor Area is having it's 60th birthday party at Chevron Park in El Segundo

September 24-29 MAFCA National Tour in Paso Robles, CA. This tour will go from Paso Robles to San Francisco and across the Golden Gate Bridge. Sounds like a lot of fun.

Ciao! **Mama Pisu**

Other Car Events of Interest for 2017

July 22nd (Sat) - Long Beach MTC Swap Meet. Long Beach City College Vet's Stadium Long Beach. 7AM 'till ?

August 6th (Sun) - Walteria Business Men's Charity Car Show. 10am -2pm. 22939 Hawthorne Blvd, Torrance Ca

August 12th (Sat) - Rock 'n Roll Car Show. Rock-Ola Jukebox Factory. 2335 208th St., Torrance. 10am-2pm

August 19th (Sat) - El Segundo Main Street Car Show. 10AM to 3PM. More info to come. See Dick Wyckoff.

August 20th (Sun) - Swap Meet and Car Show. SF Valley MAC. Rancho San Antonio Boys Home. More to come.

August 20th (Sun) - Wounded Warrior Car Show. Red. Bch Performing Arts Center. 9am- 3pm

Sept 24th (Sun) - Swap Meet- Paradise Valley MAC. Western Little League Headquarters, San Bernardino, CA

Oct 7th (Sat) - Swap Meet- OC Model T Club. Friends in Christ Lutheran Church, Fullerton

**MAFFI Newsletter Minute
June 2017**

Gilmore Car Museum / Model A Ford Museum
6865 W Hickory Rd
Hickory Corners, MI 49060
USA



The Gilmore Car Museum is the proud home of the **Model A Ford Museum**, the world's largest museum dedicated solely to the Model A! On **Saturday, September 16th**, hop in your Model A and head out to the Gilmore Car Museum for the **7th annual Ford Model A Day** and celebrate the heritage of a trusty American car with friends and family. Special events and activities will be held throughout the day including a swap meet, a Model A Hall of Fame induction, special seminars, and more! Bring your Model A or come as a spectator, this show and swap meet will be sure to please as hundreds of Model As gather in Hickory Corners, Michigan on the Gilmore's Historic Campus.

Spectator Admission: \$12.00/person, children 11 and under free
Model A Exhibitor: \$10.00

MAFFI Members: Free to the Gilmore Museum
For more information, please visit www.MAFFI.org
Or contact:
Lou Ironside - Model A Ford Foundation
(810)798-8803
louironside@aol.com



**2018
EARLY BIRD
NEWSLETTER
REGISTRATION
FREE!**

**MAFCA
National Convention
June 24 -29, 2018**

**Free Sign Up for the Early Bird Newsletter
Get Advance Information
Info on Registration, Seminars, Activities & Hotel
Distributed by Email Only
The Nugget in Sparks, NV Only \$79 per Night
Much, Much More...**

**For More Info
or to
Sign Up**

<http://www.ncrgmafca.com/2018MAFCAConvention/2018index.html>

**MAFCA's
2017 National Tour
September 24-29
Pacific Coast Highway**

Starting on California's Central Coast in Paso Robles and heading north along California's spectacular coast, driving the world famous *Pacific Coast Highway*, to the city by the bay, where you, too, will leave your heart, in *San Francisco*

Along the way visit

- Hearst Castle
- Big Sur State Forest
- World Famous 17 Mile Drive
- Bixby Creek Bridge
- Monterey Bay
- Carmel by the Sea
- Pebble Beach
- Spectacular Redwood Trees
- The Golden Gate Bridge
- and many more must-see sights

Registration information and materials are in the March/April *The Restorer* magazine or register online at www.mafca.com

**Don't miss this spectacular event
All while driving your Model A Ford**

Hosted by the Bakersfield Model A Ford Club



Vintage Information

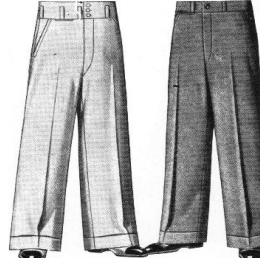
Whatsyoumacallit Dictionary

By

Phillip R. Schwartze

I have decided that it is my civic and educational duty to finally correct a long-standing injustice. For years people have been using the terms like gizmo and widget incorrectly. This new generation of adults needs to move into the 21st Century fully armed with the correct nomenclature for small unusual objects. You can cut this article out of the paper and carry it with you to use as a guide when identifying the many and common small objects that are part of our daily lives. Now, once and for all here are the latest and most up to date definitions for unusual parts and pieces. This is the 2004 Edition of the Whatsyoumacallit Dictionary. If you correctly memorize all of these names, you can amaze and astound your friends with your knowledge of the proper nomenclature of many small things. Take for instance, Gizmos and Gadgets are things that always have moving parts and are often electronic. Doochiekeys, on the other hand, are very ornate and usually made of brass. Some Doochiekeys date back to the time of Early Man. Whatnots are porcelain or glass, and should never be confused with Thingamajigs which are painted wood. The later model Thingamajig is a Thingamabob and made out of cheap plastic. Doodads are aluminum and are the fancy and very long lasting version of Dealees that were originally handcrafted out of wood and leather by Old World Artisans. By the way, Dealee is often misspelled "Dealy" by the uninformed. Fake Dealees are called Thingies and sold to unsuspecting buyers. It's sad to see someone who thought he bought a Dealee and all he really has is a worthless Thingie. Widgets are very popular small objects that are manufactured on an assembly line instead of being handmade. The handcrafted version of a Widget is a Gadget. I hope my contribution to Society and the educational system will permanently rectify the injustices to the naming of small objects. In the near future I will publish the Nerd Dictionary so that citizens can easily identify Nerds and not confuse them with Geeks and Dweebs.

YOU MUST HAVE A PAIR OF SPORTS TROUSERS



Right Up to Date!
You need white twill trousers for tennis, the beach, and all sorts of summer occasions. The slant pockets, wide waist band, art-down belt loops, and 25-inch self bottoms are right in the minute, as are the flaps on the two back pockets. The cotton twill is heavy flanne and PRE-SHRUNK. SIZES: 28 to 34 inches waist and 28 to 34 inches inseam. State measurements. **48E7673—High Quality White Twill Trousers. Postpaid.....\$1.75**

Flannels Are Style
Style critics agree that plain tan and gray flannel trousers are fast replacing knickerbockers for sport wear. There are of high quality all wool flannel and are cut with the up-to-date slant pockets and front-on fly. Suits. Others will ask \$6 or \$7 a pair for this quality! Sizes: 28 to 34 inches waist and 28 to 34 inches inseam. State measurements. **48E7681—Plain Light Tan Flannel Trousers. Postpaid.....\$3.98**
48E7682—Plain Light Gray All Wool Flannels. Postpaid.....\$3.98



Genuine Palm Beach
In case of heat—keep cool!—You need—either for the beach or city, comfortable and washable—either for the beach or city—cool—a hard finished cloth that keeps a cool wet and 25-inch self bottoms are right in the minute, as are the flaps on the two back pockets. The cotton twill is heavy flanne and PRE-SHRUNK. SIZES: 28 to 34 inches waist and 28 to 34 inches inseam. State measurements. **48E7683—Medium Duck Pure Cotton Trousers. Postpaid.....\$2.75**
48E7684—Light Duck Pure Cotton Trousers. Postpaid.....\$2.75
48E7685—Medium Duck Pure Cotton Trousers. Postpaid.....\$2.75
48E7686—Light Duck Pure Cotton Trousers. Postpaid.....\$2.75

Pre-Shrunk White Duck or Linen
No wonder we find the field and home—PRE-SHRUNK. One size that also fits quarter horse and 25-inch self bottoms are right in the minute, as are the flaps on the two back pockets. The cotton twill is heavy flanne and PRE-SHRUNK. SIZES: 28 to 34 inches waist and 28 to 34 inches inseam. State measurements. **48E7687—Medium Duck Pure Cotton Trousers. Postpaid.....\$2.75**
48E7688—Light Duck Pure Cotton Trousers. Postpaid.....\$2.75
48E7689—Medium Duck Pure Cotton Trousers. Postpaid.....\$2.75
48E7690—Light Duck Pure Cotton Trousers. Postpaid.....\$2.75

For the Good Old Summertime YES! THEY'RE COOL!

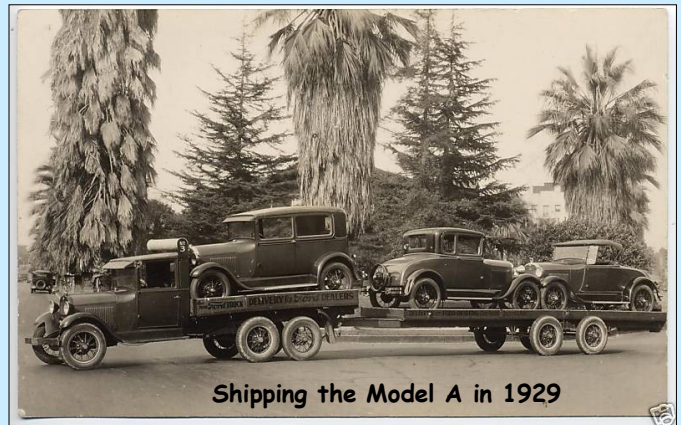


Stylish Summer Combination

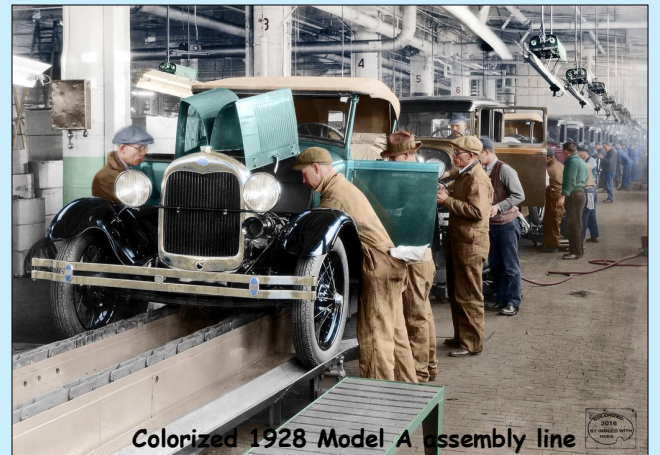
(Sold Separately)
Here is the combination you can't beat for sports wear for the most dressed up summer occasion! The handsome, well tailored, tan or blue sport jacket, in made of fine quality all wool flannel, is lined for coolness. The slant pockets and the four slant pockets in back give it just the swagger that summer often demands. The trousers are a handsome flanne and quality all wool white serge with fancy slant black stripes. The stripes are beautiful, and more worned means long wear and shape keeping qualities. You can order either of the coats or the trousers separately. **SIZES: Coats: 34 to 42 inches chest; Trousers: 28 to 34 inches waist and 28 to 34 inches inseam. State measurements. 48E7320—Medium Light Brown All Wool Flannel Coat. Postpaid.....\$9.95**
48E7321—Blue All Wool Flannel Coat. Postpaid.....9.95
48E7322—Medium Light Brown All Wool Flannel Trousers. Postpaid.....\$4.95
48E7323—Blue All Wool Flannel Trousers. Postpaid.....\$4.95

Sport Outfit De Luxe!

(Sold Separately)
Here's a stylish combination of double breasted blue serge coat and plain white flannel trousers. Every man should have at least one such outfit. Now you can save a lot of money. The coat is of excellent quality fine twill blue serge, one-fourth lined, and beautifully tailored—the kind usually sold at \$15.00. The trousers are of a standard, nationally known, all wool white flannel, beautifully tailored and really worth \$7.50. You can buy either the coat or trousers separately. **SIZES: Coat, 34 to 42 inches chest; Trousers, 28 to 34 inches waist and 28 to 34 inches inseam. State measurements. 48E7313—All Wool Navy Blue Serge Coat. Postpaid.....\$9.45**
48E7314—All Wool Navy Blue Serge Trousers. Postpaid.....\$4.50



Shipping the Model A in 1929



Colorized 1928 Model A assembly line

Measuring Instructions Are on Back of Order Blanks in Back of Catalog P158 723

Happenings at Al's Garage



Several projects are ongoing at Al's Garage. Jim Huizdos' Slant Window sedan is basically done, except for changing out the wheels from 17" rims back to 19" rims and tires. The car actually came out pretty nice after we evicted the mice dynasty from their long time castle! Remember, this was a true barn find. . . . The four mechanics are finishing up the wiring on Jim's car.



The next ongoing project is Steve Thompson's '31 Deluxe Phaeton. It needed the engine rebuilt along with some cosmetic work in the engine compartment. This is where our resident welder, Phil Bonneau patched up a few holes in the firewall. Things are

moving along nicely at this time. Steve is shown grinding welds in preparation for painting.



Steve's new engine



The crew inspecting Tim Harrison's Station Wagon. The shocks are bad so Tim is installing new Stipe shocks. Should make a big difference!

NATIONWIDE
REAL ESTATE EXECUTIVES

JIM BEARDSLEY
REALTOR®

DIRECT (310) 466-1122
OFFICE (562) 423-8134
EMAIL JIM.BEARDSLEY@OURNATIONWIDE.COM

LIC # 01976588

NATIONWIDE REAL ESTATE EXECUTIVES
4425 ATLANTIC AVE BLDG C • LONG BEACH, CA 90807

Rotary

TORRANCE TRANSMISSION SERVICE

Drain Marshall says:
Ask about their
Model A **ERIC BAILEY**
Lube, oil change
Special

Phone: (310) 378-9217 24009 S. Hawthorne Blvd.
Torrance, CA 90505

AUTOPLEX
INDEPENDENT REPAIR
IMPORT - DOMESTIC

**Model 'A' 6 volt
Interstate Battery
Specials**

ASE
FACTORY TRAINED
MASTER CERTIFIED
TECHNICIAN

OWNER
16015 S. Western Ave.
Gardena CA. 90247
310-323-0969

The **HarborLight** is a monthly publication for the Harbor Area MARC/MAFCA. All articles or want ads must be received by the 15th of each month in order to appear in the following month's publication. Neither the **HarborLight** and its staff, nor the Harbor Region of the Model A Restorer's Club Inc. and Model A Ford Club of America, Inc. will assume any liability for errors or omissions, or for any liability or resultant damages for products, opinions or services listed herein. Some information contained in our newsletter has been reprinted from other newsletters; we thank and acknowledge them. Editor

Proud printer of the HarborLight

STUDIO PRINTING

1750 E. Holly St.
El Segundo, CA 90245

Edward Su
ed@studioprinting.net
www.studioprinting.net

310+333+8989
fax 310+333+8986
cell 310+292+3219

Celebrating

60 years

1957-2017

Harbor Area Model A Club

VELLIOS

AUTOMOTIVE MACHINE SHOP

4625 Manhattan Beach Blvd.
Lawndale, CA 90260

(310) 643-8540

LUNADA BAY AUTOMOTIVE

- Anti-Lock Brakes
- Smog Test & Repair
- 4-Wheel Alignment
- Clutches
- Fuel Injection
- Computer Controls
- Air Conditioning
- Engines

We Repair Model A Fords

310.375.8313

David Duke

2133 Palos Verdes Dr. West • Palos Verdes Est., CA 90274

Lic#496791

INDUSTRIAL LOCK and SECURITY

COMMERCIAL • RESIDENTIAL • AUTO
LOCKS SERVICED & INSTALLED
KEYS MADE • SAFES • ACCESS CONTROL
BONDED & INSURED

24 hr. EMERGENCY SERVICE
401 Main Street
El Segundo, CA 90245
FAX (310) 322-3627

ELYSE BEARDSLEY (310) 322-3252

EARLY FORD STORE of California

Specializing in Rare Parts and Accessories for Early Fords 1928/1972 Passenger Car & Pick-Up

www.earlyfordstore.com

Bill McGrath
San Dimas, CA 91773
108 W. Bonita Ave.
Tel: (909) 305-1955
Fax: (909) 305-1953

M B RENTALS

Studio Equipment
Lights and Fixtures

Drain Marshall
Home: (310) 378-5061
Cell: (310) 883-3712

showrooms: palos verdes,
beverly hills, lake arrowhead,
torrance & new york city

tel: 800.293.7826 fax: 888.393.7826
westco@westcoelectrical.com
www.westcosmarthomes.com

WESTCO SMART HOMES

jack goldberg, pe president

BRATTONS ANTIQUE AUTO PARTS

1606 BACK ACRE CIRCLE
MOUNT AIRY, MD 21771

Order # **800 255-1929**
Web: **brattons.com**

FREE 194 page illustrated MODEL A parts catalog
Catalog contains 3,200 Model A parts with full descriptions and Picture of each part.

Supplying Quality by using over 90% U.S. parts
Serving the Model A restorer with parts since 1977

Ford H & H

Antique Ford Engine Rebuilding

Max Herman

4451 Ramsdell Avenue
La Crescenta, CA 91214
www.handantique.com

Tel: (818) 248-2347
Fax: (818) 248-0161

ARIZONA MODEL A, L.L.C.

- NEW PARTS
- USED PARTS
- SERVICE
- RESTORATION

HOURS: TUES-FRI 9-12, 1-5
SAT & EVES BY APPOINTMENT

SAMUEL P. GUTHRIE

15838 S. GILBERT RD., CHANDLER, AZ 85225
(480) 782-0266

KAREN'S GIRL TALK

16803 South Prairie Avenue
Lawndale, CA 90260

Phone: (310) 370-2916

All Beauty Services
by Karen

Mike's "A" Ford-able Parts

Mike Butcher

124 Model A Drive, Maysville, GA 30558
email: mike@mikes-afordable.com • www.mikes-afordable.com
Fax: 706 652 2492 • Phone: 706 652 3866
1 888 TRY MIKE (879 6453)

Specialising in 1928 - 1931 Model A Ford Parts

OPEN 7 DAYS

(310) 323-7993
FAX (310) 323-8983

Lomeli's
ITALIAN RESTAURANT, INC.

ESTABLISHED 1978

2223 W. Redondo Beach Blvd.
Gardena, CA 90247

CARLO LOMELI

LUIS LOYOLA Certified LeBaron-Bonney Installer

Loyola Auto Interiors

310-225-6889

CONVERTIBLE TOPS • UPHOLSTERY

1859 W. 169th STREET • GARDENA, CA 90247
lai212@sbcglobal.net • www.loyolaautointeriors.com

Marivel Costanza
Broker, REALTOR, ASD, CDAO, SFR, Probate
BRE #00968395

WWW.HOMESBYMARIVEL.COM
MARIVELCOSTANZA@AOL.COM

Let my experience work for you!

28901 S. Western Avenue, Suite 101
Rancho Palos Verdes, CA 90275
Cell (310) 413-0658
Fax (310) 787-8525

FOR SALE

kw KELLERWILLIAMS

Awards • Plaques
Medals • Ribbons
Laser • Engraving

A&E TROPHIES AND ENGRAVING
24519 Narbonne Ave. Lomita, CA 90717

SANDRA HEIN

Ph: (310) 539-1033
Fax: (310) 539-9970

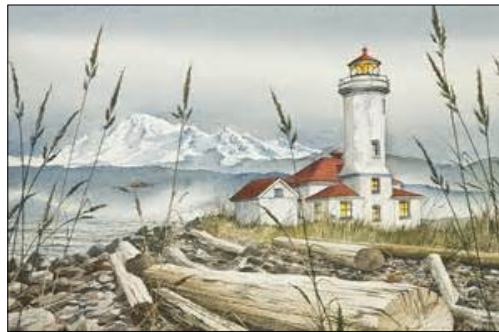
First Class Embroidery

Antonio y Maria Velazquez

Tel: (310) 326 - 7635
Fax: (310) 326 - 4468
560 W. 182nd St. Gardena, CA 90248
email: avelaz103@aol.com
www.firstclassembroidery.com



For MARC info and membership, see
www.ModelARestorers.org



For MAFCA info and membership, see
www.MAFCA.com

The Harbor Area A's meet monthly on the last Friday of every month at the Walteria Park Clubhouse, located at 3855 W. 242nd St. in Torrance, California. Meetings begin at 7:30 PM (The park is located about 1-1/2 blocks west of Hawthorne Blvd. and one block south of Pacific Coast Hwy.) We'd like to invite all interested parties, even if they don't own a Model A Ford, to come and join us. Our goal is to educate the public about Model A Fords and have fun while doing it.

2016 Board of Directors:

President:

Montelle Bates III (310) 516-0468

Email: 1931TudorMonty@gmail.com

Vice-President:

Tim Harrison (310) 318-5920

Treasurer:

Daffy Wagner (310) 374-6113

Secretary:

Donnis Bates (310) 516-0468

Tour Director(s):

Elaine Pisu (310) 793-1789

Jim Huizdos (310) 375-2737

Appointed Officers:

Technical Director:

Cliff LeFall (323) 715-3153

Membership:

Ursula Schmidt (310) 539-5391

Historian:

Sue Hankins (310) 782-0082

Sunshine Secretary:

Doris Marshall (310) 378-5061

Theresa LeFall (323) 715-3153

Advertising:

Jim Huizdos (310)-375-2737

Refreshments Coordinator:

Ruxella Speights (310) 675-2243

Appointed Officers:

Tool Custodian:

Bob De Crescenzo (310) 540-3690

Merchandise:

Gloria Younkin (310) 316-8722

M/Sergeant-at-Arms:

Jack Gordinier (310) 328-7333

Webmaster:

Sue Hankins (310) 782-0082

www.HarborAreaModelAClub.com

HarborLight Editor:

Dick Wyckoff

Phone: (310) 322-8863 (h)

(310) 292-1929 (c)

E-mail: Janndick@earthlink.net

TO:



Happy 4th of July



July 2017

From:
Harbor Area MARC/MAFCA
Dick Wyckoff, Editor
337 Lomita St.
El Segundo CA 90245

The HarborLight

