



Harbor Area Model 'A' Club

Dedicated to preserving and driving the 1928-1931 Model 'A' Ford since 1957
Torrance, California

July 2020

2017-2020 MARC
Award of Continuing Excellence
for Harbor Light newsletter



17 Harbor members for supper at Ruby's last Friday

Upcoming Business Meetings



The **June** meeting is scheduled for **Friday the 26th**.
CANCELLED

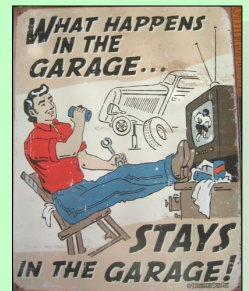
We will keep our members informed if there are any changes to the meeting schedule. Your health and safety is our prime concern

Technical Activities

Cancelled until (TBD)

Saturday mornings.
We meet from about 10am to noon to work on Model A projects.
Bring your Model A by and we'll work on it.

Al's Garage, 907 Van Ness, Torrance CA (in the alley)



Model A Events & Local Shows

(Note: These events subject to change)

July 17-19 Solvang Drive 'n Dine **Cancelled**

August 16th—Sun Wounded Warrior Car

Show. 9am -3pm. Redondo Beach **TBD**

August 22nd—Sat El Segundo Car Show **TBD**

September 26—(Sat) Antique Swap Meet

Paradise Valley Model A Ford Club

Next Board Meeting

It will be at Torrance Memorial Hospital, West wing, on **Tuesday, July 5th, 2020** at 7pm.
Exact room TBD.

(TBD)

We will be planning upcoming events.



inside

- 2 Wayne's Words —
- 2 Model A Yard Art
- 3 Birthdays/Anniversaries-Editor's Corner
- 4 Club merchandise—
- 4 Member recipes
- 5 Business meeting notes (On virus hold)
- 5 Virus humor

- 6 Tech Talk — 3X Spark Plugs
- 7 Touring with Elaine & For Sale
- 8 History of the Car Radio
- 9 MAFFI info. & Social Distancing
- 10 Era Fashions
- 11 Our Advertising Friends
- 12 Officer List & Mailing Info



Wayne's Words of Wisdom
A Note from our
President
Wayne Sterling



Something to do!

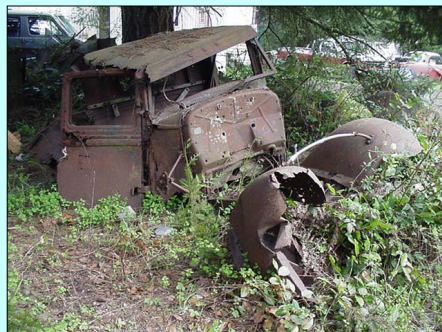
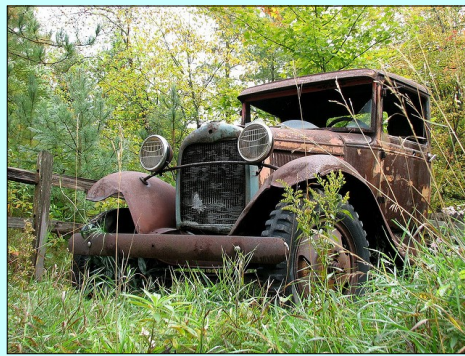
We'll here we are 3 months into the Pandemic and hopefully we will officially be meeting soon. For now, there is no business or board meeting scheduled. We are waiting for our meeting places to reopen.

On a more positive note, some of us informally got together for the second Friday in a row at Ruby's Redondo Beach for dinner. We will continue to do so at 4:30—5:00 and those of you that are comfortable please join in. Last Friday we had 14 or so members and 4 Model A's

Hope to see everyone real soon.

Wayne Sterling,
President

Model A Yard Art



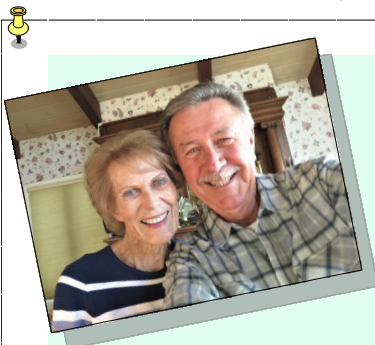
July Birthdays

- 1 Doris Marshall
- 1 Dr. Steve Thompson
- 5 Peggy Hopkins
- 6 Patrick Migliazzo
- 10 Mike Wright
- 13 Mirco Pisu
- 18 Donnis Bates
- 20 Joe Freitag
- 25 Noralene Porper
- 27 Pat Harrison
- 27 Bill Kealey



July Anniversaries

- 3 Mirco & Elaine Pisu
- 6 Jim & Dianne Runyon
- 9 Ron & Sandy Ragon
- 13 Jack & Joan Gordinier
- 23 Bob & Carol Olsen



Editor's Corner By Dick Wyckoff

A Tough Couple of Months

Well, as you already know, not a whole lot of things happening in the Model A community.

At least our friendships are still intact. It's nice to know that we are still healthy and looking forward to opening up to some activities in the near future.

For example, several of us have started going to Ruby's restaurant on Fridays to have a bite to eat about 4PM. The usual crowd of cars of all types that met on Fridays is not there and there is no organized raffle, etc. Last week we had 17 show up with four Model As. Why don't we do this each week? Jan and I needed a break from 'lockdown' and we got to drive 'Tootsie'.

The Solvang 'Drive 'n Dine' event is cancelled as a club event, but if you want to go on your own, that's fine. As you know, the Friday evening stage show was cancelled. As a courtesy, call the hotel and cancel your reservations. Maybe next year we can work up a trip. . . .

Let's all keep in touch. This, too, shall pass. . . .

Dick



(On hold) Monday Supper

Our usual Monday evening gathering at a local restaurant has been postponed due to the virus epidemic. The club is monitoring the events as they unfold and will keep you posted.

One of the changes we were making prior to the shutdowns of eating establishments was to move around to different restaurants in the area. This has been popular and will continue when the situation changes and we are safe to dine together again.

Watch your emails and the Harbor Light for the latest information. Things are opening up. . . .

Saturday Morning Coffee Gathering is Going Again!

If you are looking for a little tire-kicking adventure on **Saturday** mornings between 7 and 9AM, check out the Caffeine Cruisers at the corner of Artesia Blvd. and Hawthorne, in Torrance, CA. Several of the Harbor Model A club members and other car enthusiasts of all car types meet to talk cars. There are some very nice autos and some nice people there, too! The address is 17400 Hawthorne Blvd., Torrance CA. (at Artesia Blvd.)

Come on by, have a cup of Starbucks, and get your weekend started in true So. California style.



2020 Membership, Roster and Club Merchandise Items

Ruxella and Jim have a selection of new **Club merchandise**. We have hats, shirts, patches, t-shirts and we still have 60th anniversary items for sale at a discount. More to come.

The **2020 Harbor phonebooks/rosters** are available. The first booklet is free to members. Additional copies are \$1. They are also available free of charge through e-mail. Club members that don't attend events can request a phonebook/roster by mail. Contact **Ursi Schmidt** at 310-539-5391. Make sure Ursi has your latest info.

Just a note: We regularly update the roster. If you have any address changes, phone number changes or email changes, let Ursi know. Let Dick Wyckoff know, too. He'll put the info in the **Harbor Light**.

Jenny's Apple Bread

- 1½ cups flour
- 1 teaspoon cinnamon
- ½ teaspoon baking soda
- ¼ teaspoon salt
- ¼ teaspoon baking powder
- ¼ teaspoon nutmeg
- 1 cup sugar
- 1 cup shredded apple (use a grater)
- ¼ cup oil
- 1 egg
- ¼ teaspoon lemon zest or 1/8 teaspoon lemon extract
- ½ cup chopped nuts

Preheat oven to 350 degrees. Grease an 8x4x2 loaf pan. Combine flour, cinnamon, baking soda, salt, baking powder, and nutmeg. In a larger bowl, combine sugar, apple, oil, egg, and lemon; mix well. Stir in the flour mixture just until combined. Stir in the nuts. Pour in loaf pan and bake for 55-60 minutes, or until it tests done. Turn loaf out of pan and cool thoroughly. If possible, wrap and store overnight before slicing.

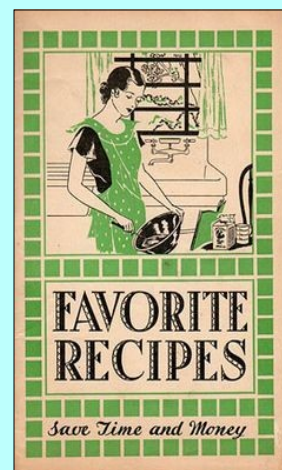
Dan & Liz Fitzgerald, Palos Verdes, CA

Brown Sugar Macaroons

- 1 egg white
- 1 cup brown sugar
- 2 scant cups chopped pecans
- 1 teaspoon vanilla

Beat egg white until stiff. Beat in brown sugar. Add vanilla and pecans. Drop by teaspoon on well-greased baking sheet. Bake in slow oven until brown. Coconut may be used in place of pecans.

Doris Marshall, Rolling Hills, CA



HARBOR AREA MODEL 'A' CLUB MEETING

June 2020

Due to the Coronavirus pandemic, the May meeting was cancelled. Folks are encouraged to follow the "Stay at Home" request and keep in contact with other members. We are a family, you know.

THE VIRUS REPORT PAGE

Thou Shall Not Leave Your Home

Our daughter forbid us to leave our home. I accused her of making sure that we stay at home.....the tree won't let us move the Scion which is blocking Bea's Toyota Camry and our Pandora...

New project to do while staying home.

Mickey Fruchter



I am really bored

I renamed all the rooms in my house so that I could say that today I went to the gym, headed into my office, grabbed a quick bite at the diner, and have an appointment at the spa this afternoon. Last week I traveled to Patio Vallarta.

There are 2 types of people in the world...



6

So What Did You Do Today?

Les Eddington sent me a copy of his personal journal which chronicles his first days at home during our quarantine. Perhaps you are having a similar experience.

Day 1 – I Can Do This!! Got enough food and wine to last a Month!

Day 2 – Opening my 8th bottle of wine. I fear wine supplies might not last!

Day 3 – Strawberries: Some have 210 seeds, some have 235 seeds. Who Knew??

Day 4 – 8:00 PM: Removed my Day Pajamas and put on my Night Pajamas.

Day 5 – Today I tried to make Hand Sanitizer. It came out as Jello Shots!!

Day 6 – I get to take the garbage out. I'm so excited, I can't decide what to wear.

Day 7 – Laughing way too much at my own jokes!!

Day 8 – Went to a new restaurant called "The Kitchen". You have to gather all the ingredients and make your own meal. I have no clue how this place is still in business.

Day 9 – I put liquor bottles in every room. Tonight, I'm getting all dressed up and going Bar hopping.

Day 10 – Struck up a conversation with a Spider today. Seems nice. He's a Web Designer.

Day 11 – Isolation is hard. I swear my fridge just said, "What the hell do you want now?"

Day 12 – I realized why dogs get so excited about something moving outside, going for walks or car rides. I think I just barked at a squirrel.

Day 13 – If you keep a glass of wine in each hand, you can't accidentally touch your face.

Day 14 – Watched the birds fight over a worm. The Cardinals lead the Blue Jays 3-1.

Day 15 – Anybody else feel like they've cooked dinner about 395 times this month?



Thanks to the Santa Anita A's for a little humor!

Technical Talk

Champion 3X Spark Plugs for 1928-1931 Model A Fords

Left: New Old Stock -- Right: Reproduction (1960s and later)



Differences between the NOS and Reproduction Plugs:

3X on the Porcelain of the NOS plug has a rounded top 3; the repro plug has a flat top 3.

Knurling on the base of the NOS plug goes all the way to the bottom; repro plug knurling does not.

NOS box has red end flaps and does not mention Model B; repro box has blue end flap and mentions A, B.

NOS box front says "Dependable"; repro box front says "Guaranteed Dependable".

Photo by Rick Black, 2009

For Sale (Misc Model A & T parts)

New Model A fiberglass fenders—\$75 each

2—28/29 Sedan rear-

1- 28/29 Left front-

2 Steel left front fenders 30-31 - \$20

2 Closed door windshield frames - Make offer

2 Splash aprons 30-31 "

28/29 Truck cab parts "

Misc Model A parts (Call me) "



1920 Model T Center Door Sedan

Very Straight body, Safety glass, decent wood, doors close good

Running 26/27 Engine & Trans. \$6700

Call Paul @ 310-218-7266

REAL LIFE ADVENTURES: by Wise/Aldrich





Touring with Elaine By Elaine Pisu, Tour Director



Possible tour?



18th Annual All Ford Car Show and Swap Meet

Saturday September 12, 2020

Car Show • 9 am-3 pm | Swap Meet • 7 am

AWARDS • RAFFLE PRIZES • 50/50 • LIVE MUSIC
Non-Food Vendors Welcome!

Benefits Allan Hancock College Industrial Technology Scholarships

Old Town Orcutt

at the Orcutt Union Plaza
201 S. Broadway, Orcutt, CA 93455

Contact Jay McCord (805) 598-8133 • Curt Warner (805) 478-1231
ENTRY APPLICATIONS AVAILABLE AT: www.santamariamodelclub.com

CONTRIBUTING SPONSORS
















**I am happy to announce the Model A Tool Display cases are
NOW once again being produced!**

These Custom Made Tool Display Cases are hand built by Jamey Eaton
Each case is priced at \$275.00 & includes the quilted slip cover, and over 35 choices of
stain to personalize your case.



Please follow the link to the Vintage Ford Forum for more information
and, how to order your custom Model A Tool Display case.

<https://www.vintagefordforum.com/store>

**Handmade Policeman accessory
for your car.**



Attach to license plate holder.
About 9" tall. When you brake, the arms
swing out. Neat accessory!
They are \$100 each .
Very popular. . .

Contact: Bobby "D" @ 310 540-3690.
Torrance, CA

Roster Update

Theresa LeFall has a new email address:

Theresa.Blue1921@icloud.com

HISTORY OF THE CAR RADIO

Seems like cars have always had radios, but they didn't. Here's the story: One evening, in 1929, two young men named William Lear and Elmer Wavering drove their girlfriends to a lookout point high above the Mississippi River town of Quincy, Illinois, to watch the sunset. It was a romantic night to be sure, but one of the women observed that it would be even nicer if they could listen to music in the car. Lear and Wavering liked the idea. Both men had tinkered with radios (Lear served as a radio operator in the U.S. Navy during World War I) and it wasn't long before they were taking apart a home radio and trying to get it to work in a car. But it wasn't easy: automobiles have ignition switches, generators, spark plugs, and other electrical equipment that generate noisy static interference, making it nearly impossible to listen to the radio when the engine was running.

One by one, Lear and Wavering identified and eliminated each source of electrical interference. When they finally got their radio to work, they took it to a radio convention in Chicago. There they met Paul Galvin, owner of Galvin Manufacturing Corporation. He made a product called a "battery eliminator", a device that allowed battery-powered radios to run on household AC current. But as more homes were wired for electricity, more radio manufacturers made AC-powered radios. Galvin needed a new product to manufacture. When he met Lear and Wavering at the radio convention, he found it. He believed that mass-produced, affordable car radios had the potential to become a huge business. Lear and Wavering set up shop in Galvin's factory, and when they perfected their first radio, they installed it in his Studebaker. Then, Galvin went to a local banker to apply for a loan. Thinking it might sweeten the deal, he had his men install a radio in the banker's Packard. Good idea, but it didn't work. Half an hour after the installation, the banker's Packard caught on fire. (They didn't get the loan.) Galvin didn't give up. He drove his Studebaker nearly 800 miles to Atlantic City to show off the radio at the 1930 Radio Manufacturers Association convention. Too broke to afford a booth, he parked the car outside the convention hall and cranked up the radio so that passing conventioners could hear it. That idea worked -- He got enough orders to put the radio into production.

That first production model was called the 5T71. Galvin decided he needed to come up with something a little catchier. In those days many companies in the phonograph and radio businesses used the suffix "ola" for their names - Radiola, Columbiola, and Victrola were three of the biggest. Galvin decided to do the same thing, and since his radio was intended for use in a motor vehicle, he decided to call it the Motorola. But even with the name change, the radio still had problems. When Motorola went on sale in 1930, it cost about \$110 uninstalled, at a time when you could buy a brand-new car for \$650, and the country was sliding into the Great Depression. (By that measure, a radio for a new car would cost about \$3,000 today.) In 1930, it took two men several days to put in a car radio -- The dashboard had to be taken apart so that the receiver and a single speaker could be installed, and the ceiling had to be cut open to install the antenna. These early radios ran on their own batteries, not on the car battery, so holes had to be cut into the floorboard to accommodate them. The installation manual had eight complete diagrams and 28 pages of instructions. Selling complicated car radios that cost 20 percent of the price of a brand-new car wouldn't have been easy in the best of times, let alone during the Great Depression.

Galvin lost money in 1930 and struggled for a couple of years after that. But things picked up in 1933 when Ford began offering Motorola's pre-installed at the factory. In 1934 they got another boost when Galvin struck a deal with B.F. Goodrich tire company to sell and install them in its chain of tire stores. By then the price of the radio, with installation included, had dropped to \$55. The Motorola car radio was off and running. (The name of the company would be officially changed from GalvinManufacturing to "Motorola" in 1947.)

In the meantime, Galvin continued to develop new uses for car radios. In 1936, the same year that it introduced push-button tuning, it also introduced the Motorola Police Cruiser, a standard car radio that was factory preset to a single frequency to pick up police broadcasts. In 1940 he developed the first handheld two-way radio -- The Handy-Talkie for the U. S. Army. A lot of the communications technologies that we take for granted today were born in Motorola labs in the years that followed World War II. In 1947 they came out with the first television for under \$200. In 1956 the company introduced the world's first pager; in 1969 came the radio and television equipment that was used to televise Neil Armstrong's first steps on the Moon. In 1973 it invented the world's first handheld cellular phone. Today Motorola is one of the largest cell phone manufacturers in the world. And it all started with the car radio.

Whatever happened to the two men who installed the first radio in Paul Galvin's car? Elmer Wavering and William Lear, ended up taking very different paths in life. Wavering stayed with Motorola. In the 1950's he helped change the automobile experience again when he developed the first automotive alternator, replacing inefficient and unreliable generators. The invention lead to such luxuries as power windows, power seats, and, eventually air-conditioning. Lear also continued inventing. He holds more than 150 patents. Remember eight-track tape players? Lear invented that. But what he's really famous for are his contributions to the field of aviation. He invented radio direction finders for planes, aided in the invention of the autopilot, designed the first fully automatic aircraft landing system, and in 1963 introduced his most famous invention of all, the Lear Jet, the world's first mass-produced, affordable business jet. (Not bad for a guy who dropped out of school after the eighth grade.)

Sometimes it is fun to find out how some of the many things that we take for granted actually came into being!



MAFFI Newsletter Minute June 2020



Model A Day at The Gilmore is planned for September 18-19. Our theme this year is "Model A First Responders". We plan to have police vehicles, fire trucks and a Model A ambulance on exhibit as part of our event. We also plan to have our swap meet as well as technical and fashion seminars.

The MAFFI Trustees have been working with The Gilmore staff to assure that the museums and grounds at The Gilmore are as safe as possible to prevent the spread of Covid-19. The Gilmore will assure that procedures will be in place in accordance with Federal and CDC guidelines and Michigan safety and health regulations. There will be changes required to be in compliance with health regulations. Restrictions in gatherings of crowds will require a change in how we conduct seminars. Masks will be required of Gilmore employees and food service will be changed so that food orders are delivered to visitors after orders are taken. Our interactive displays will not be available for use this year. I'm sure other changes will be required pertaining to screening, physical distancing, PPE (personal protective equipment) and limitations in capacity. As stated by The Gilmore and fully supported by MAFFI, "Protecting the health and safety of employees and visitors is our highest calling". So, we will have to be flexible and adapt to the changes needed to support having a great event this year.

Since Model A Day attendees do not register for the event in advance, we don't have an ability to communicate with attendees through e-mail addresses. To keep everyone informed, we will communicate updates, as they occur, through our website, (www.maffi.org), The Gilmore website (gilmorecarmuseum.org) and our national club Facebook pages. Please use these communication tools to learn more about Model A Day this year at The Gilmore. Also, I encourage you to contact me or any MAFFI Trustee with your questions or concerns.

Sincerely,
John Begg, President
MAFFI

Social Distancing

- I hope they give us two weeks' notice before sending us back out into the real world. I think we'll all need the time to become ourselves again, and by "ourselves" I mean lose 10 pounds, cut our hair and get used to not drinking at 9:00 a.m.
- New monthly budget: Gas \$0 Entertainment \$0 Clothes \$0 Groceries \$2,799.
- Breaking News: Wearing a mask inside your home is now highly recommended. Not so much to stop COVID-19, but to stop eating.
- Low maintenance ladies are having their moment right now. We don't have nails to fill and paint, roots to dye, eyelashes to re-mink, and are thrilled not to have to get dressed every day. I have been training for this moment my entire life!
- When this quarantine is over, let's not tell some people.
- Not to brag, but I haven't been late to anything in over 12 weeks.
- It may take a village to raise a child, but I swear it's going to take a vineyard to home school one.
- You know those car commercials where there's only one vehicle on the road - doesn't seem so unrealistic these days ...
- They can open things up next month, I'm staying in until August to see what happens to you all first.
- Day 90: The garbage man placed an Alcoholics Anonymous Pamphlet on my recycling bin.
- The spread of Covid-19 is based on two things: 1. How dense the population is, and 2. How dense the population is.
- Home school Day 1: I'm trying to figure out how I can get this kid transferred out of my class.
- I'm putting a drink in each room of my house today and calling it a pub crawl.
- For the second part of this quarantine do we have to stay with the same family or will they relocate us? Asking for myself ...
- Enjoy your day. You don't have anything else to do.

Fashion Articles from the 1920's

[illegible]

412 D 213 \$2.98

412 D 215 \$2.49

412 D 217 \$2.69

412 D 219 \$1.79

412 D 221 \$3.29

412 D 223 \$2.69

412 D 225 \$2.98

412 D 227 \$2.49

412 D 229 \$4.49

412 D 231 \$1.69

412 D 233 \$1.98

412 D 235 \$2.79

412 D 237 \$2.98

412 D 239 \$2.98

412 D 241 \$2.98

412 D 243 \$2.98

412 D 245 \$1.98

Our Advertising Friends

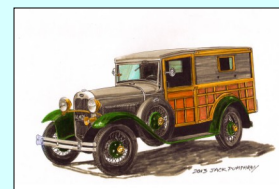
Aquarium of the Pacific
100 Aquarium Way
Long Beach, CA 90802
1-562-590-3100

CW Moss Ford Parts
420 W. Chapman Ave.
Orange, CA 92866
1-800-322-1932

Snyder's Antique Auto
12925 Woodworth Rd.
New Springfield, OH 44443
1-888-262-5712

Comedy & Magic Club
1018 Hermosa Ave.
Hermosa Beach, CA 90254
1-310-372-1193

Performance Plus Tire Superstore
3910 Cherry Ave.
Long Beach, CA 90807
1-562-988-0211



The **Harbor Light** is a monthly publication for the Harbor Area MARC/MAFCA. All articles or want ads must be received by the 15th of each month in order to appear in the following month's publication. Neither the *Harbor Light* and its staff, nor the Harbor Region of the Model A Restorer's Club Inc. and Model A Ford Club of America, Inc. will assume any liability for errors or omissions, or for any liability or resultant damages for products, opinions or services listed herein. Some information contained in our newsletter has been reprinted from other newsletters; we thank and acknowledge them. Editor

Proud printer of the 'Harbor Light'



Edward Su

ed@studioprinting.net
www.studioprinting.net

1750 E. Holly Avenue
El Segundo, CA 90245
PHONE: 310-333-8989
FAX: 310-333-8986
CELL: 310-292-3219

Torrance, CA
**JOEY'S
SMOKIN' BBQ**
www.getmesomebbq.com

25308 Crenshaw Blvd.
Torrance, CA 90505
Email: joeyssmokinbbq@outlook.com

VELLIOS



AUTOMOTIVE MACHINE SHOP

4625 Manhattan Beach Blvd.
Lawndale, CA 90260
(310) 643-8540

NATIONWIDE
REAL ESTATE EXECUTIVES

DIRECT (310) 466-1122
OFFICE (562) 423-8134
EMAIL: JIM.BEARDSLEY@OURNATIONWIDE.COM

LIC # 01976588

NATIONWIDE REAL ESTATE EXECUTIVES
4425 ATLANTIC AVE BLDG C • LONG BEACH, CA 90807

JIM BEARDSLEY
REALTOR®



Lic#496791
**INDUSTRIAL
LOCK and
SECURITY**

COMMERCIAL • RESIDENTIAL • AUTO
LOCKS SERVICED & INSTALLED
KEYS MADE • SAFES • ACCESS CONTROL
BONDED & INSURED

24 hr. EMERGENCY SERVICE
401 Main Street
El Segundo, CA 90245
FAX (310) 322-3627
(310) 322-3252

ELYSE BEARDSLEY

EARLY FORD STORE
of California
www.earlyfordstore.com

Specializing in Rare Parts
and Accessories for
Early Fords 1928/1972
Passenger Car & Pick-Up

Bill McGrath
San Dimas, CA 91773
108 W. Bonita Ave.
Tel: (909) 305-1955
Fax: (909) 305-1953



M B RENTALS

Studio Equipment
Lights and Fixtures



Drain Marshall

Home: (310) 378-5061
Cell: (310) 570-5938

showrooms: palos verdes,
beverly hills, lake arrowhead,
torrance & new york city

tel: 800.293.7826 fax: 888.393.7826
westco@westcoelectrical.com
www.westcosmarthomes.com

WESTCO SMART HOMES

president
jack goldberg, pe

BRATTONS ANTIQUE AUTO PARTS



1606 BACK ACRE CIRCLE
MOUNT AIRY, MD 21771
Order # **800 255-1929**

Web: **brattons.com**

FREE 194 page illustrated MODEL A parts catalog
Catalog contains 3,200 Model A parts with full
descriptions and Picture of each part.

Supplying Quality by using over 90% U.S. parts
Serving the Model A restorer with parts since 1977



Antique Ford Engine Rebuilding

Max Herman

4451 Ramsdell Avenue Tel: (818) 248-2347
La Crescenta, CA 91214 Fax: (818) 248-0161
www.handhantique.com

ARIZONA MODEL A, L.L.C.

- NEW PARTS
- USED PARTS
- SERVICE
- RESTORATION
- HOURS: TUES-FRI 9-12, 1-5
SAT & EVES BY APPOINTMENT



SAMUEL P. GUTHRIE

15838 S. GILBERT RD., CHANDLER, AZ 85225
(480) 782-0266



KAREN'S GIRL TALK

16803 South Prairie Avenue
Lawndale, CA 90260

Phone: (310) 370-2916

All Beauty Services
by Karen

Mike's "A" Ford-able Parts

Mike Butcher



124 Model A Drive, Maysville, GA 30558
email: mike@mikes-afordable.com - www.mikes-afordable.com
Fax: 706 652 2492 - Phone: 706 652 3866
1 888 TRY MIKE (879 6453)



Specialising in 1928 - 1931 Model A Ford Parts

OPEN 7 DAYS

(310) 323-7993
FAX (310) 323-8983



ESTABLISHED 1978

2223 W. Redondo Beach Blvd.
Gardena, CA 90247

CARLO LOMELI

BEACH AREA GARAGE DOOR

www.customgaragedoor.net CA State License 724886
Email: BeachAreaGarageDoor@verizon.net



Sales, Installation, & Service

Jon Mackey
2255 Mira Mar Ave.
Long Beach, CA 90815

(562) 987-0768
(714) 890-5666

TORRANCE TRANSMISSION SERVICE

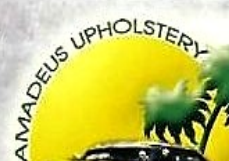
Drain Marshall says:
Ask about their
Model A
Lube, oil change
Special

ERIC BAILEY

Phone: (310) 378-9217

24009 S. Hawthorne Blvd.
Torrance, CA 90505

CUSTOM
UPHOLSTERY



CARS • BOATS
CONVERTIBLE
TOPS

Amadeo Montroy
310-542-0726

4610 Manhattan Beach Blvd.
(In rear of building)
Lawndale, CA 90260

**MAGIC
DESIGNS**

Promotional Marketing Solutions
Embroidery & Screenprinting
Uniform Program & Admin.

Magic Designs
1316 Border Ave
Torrance CA 90501
310-880-1945 Direct
310-328-2288 Office
310-328-2228 Fax
munn@magicdesigns.us
www.magicdesigns.us

Munn Ngan
Account Manager



For MARC info and membership, see
www.ModelARestorers.org



For MAFCA info and membership, see
www.MAFCA.com

The Harbor Area A's meet monthly on the last Friday of every month at the Walteria Park Clubhouse, located at 3855 W. 242nd St. in Torrance, California. Meetings begin at 7:30 PM (The park is located about 1-1/2 blocks west of Hawthorne Blvd. and one block south of Pacific Coast Hwy.) We'd like to invite all interested parties, even if they don't own a Model A Ford, to come and join us. Our goal is to educate the public about Model A Fords and have fun while doing it.

2020 Board of Directors:

President:

Wayne Sterling (310) 500-9933

Email: W Sterling@Sterling-Agency.com

Vice-President:

Dennis Simpson (310) 343-8227

Treasurer:

Daffy Wagner (310) 374-6113

Secretary:

Gloria Younkin (310) 316-8722

Tour Director:

Elaine Pisu (310) 793-1789

Appointed Officers:

Technical Director/Safety:

Cliff LeFall (323) 715-3153

Membership:

Ursula Schmidt (310) 539-5391

Historian: Open

Sunshine Secretary:

Theresa LeFall (323) 715-3153

Advertising:

Jim Huizdos (310) 375-2737

Refreshments Coordinator:

Weeg Thompson (310) 346-6409

Appointed Officers:

Tool Custodian:

Bob De Crescenzo (310) 540-3690

Merchandise:

Ruxella Speights (310) 660-2243

M/Sergeant-at-Arms:

Jack Gordinier (424)-263-2397

Webmaster: Open

Harbor Light Editor:

Dick Wyckoff

Phone: (310) 322-8863 (h)

(310) 292-1929 (c)

E-mail: Janndick@earthlink.net

TO:

Happy July 4th
Independence Day



July 2020

From:
Harbor Area Model A Club
Dick Wyckoff, Editor
337 Lomita St.
El Segundo CA 90245

The Harbor Light

