



Harbor Area Model 'A' Club

Dedicated to preserving and driving the 1928-1931 Model 'A' Ford since 1957
Torrance, California

February 2021

2016-2019 MARC
Award of Continuing Excellence
for Harbor Light newsletter.
2020 MAFCA
Newsletter of Merit



'A' Christmas Ride

Christmas 2020 was a beautiful, clear day in So Cal.

Picture was taken on Palos Verdes Peninsula with LA beach communities and Santa Monica mountains in background.

Upcoming Business Meetings

The February 2021 meeting
CANCELLED

We will keep our members informed if there are any changes to the meeting schedule. Your health and safety is our prime concern.



Technical Activities

Postponed until (TBD)

Saturday mornings.
We meet from about 10am to noon to work on Model A projects.
Bring your Model A by and we'll work on it.
Al's Garage, 907 Van Ness, Torrance CA (in the alley)



Model A Events & Local Shows

**None scheduled
Due to Covid virus**

Next Board Meeting

It will be at Torrance Memorial Hospital,
Postponed until (TBD)



inside

- 2 Wayne's Words —
- 3 Birthdays/Anniversaries
- 3 Editor's Corner
- 4 Club merchandise—
- 4 Caffeine Cruisers—
- 5 Business meeting notes (On virus hold)
- 5 Art Wagner's Model A Story

- 6 Tech Tips— Gas filter
- 7 Touring with Elaine
- 7 Harbor's Tool list—Contact Bobby D.
- 8 MAFFI notes
- 9 MARC MAFCA info
- 10 Klaxton horn history
- 11 Our Advertising Friends
- 12 Officer List & Mailing Info



Wayne's Words of Wisdom
A Note from our
President
Wayne Sterling



Thoughts for the future

This has not been a fun ride these last few months. Some of us have driven our As around locally just to get outdoors during this virus lockdown thing. At least the Caffeine Cruisers on Saturday morning is still going on. Masks are worn. Safety is the key word here.

Hopefully this coming year we will be back in 'Al's Garage' on Saturday mornings. Sure miss that. Stay safe and wear that mask!

Wayne Sterling, President

Grandpa's Last Model 'A' Ride

by Dick Wyckoff

My wife, Jan, and I were discussing where to go for a ride one nice Sunday afternoon. I had just cleaned our 1930 Model 'A' Cabriolet it was looking pretty nice. We decided to take it for a spin down to the harbor entrance to Marina Del Rey, CA. Not a long drive, maybe six or seven miles, but a scenic one.

The parking area at the marina runs parallel to the entrance and is a perfect place to watch the boats coming and going and to chat with people. We found a spot at the east end of the lot about fifty feet downwind from a nice observation point. The temperature was in the upper 70's with a small breeze. Families passed and chatted with us. A nice day.

A nicely dressed family of about seven people arrived and congregated about the observation point for a while. There was an elderly woman, a couple middle aged adults, and some youngsters. They were quiet but kinda antsy. Soon one of the men climbed over the handrail and down the rocks to the water's edge as if to inspect the area. He mentioned something about being a good spot, whatever that meant. The rest of the crowd huddled around him as he returned to the handrail. A couple more people joined him on the other side of the handrail. The elderly woman handed a container of some sort to the group as they returned to the water's edge.

While Jan and I watched this unusual activity, the container was opened and a cloud of what appeared to be ashes was emptied into the channel. Just as the ashes were discharged, a gust of wind came up and blew an ash cloud up over the handrail and all over the cars parked nearby. Of course, the nice clean Lombard Blue Cabriolet was in the line of fire.

The family was upset and tried to clean the ashes from the rocks and the surrounding area by splashing water about. The rest of us watching this ceremony and tried not to show our emotions at this serious, somewhat humorous event.

When the family reassembled on the pathway, we found out that the ashes were of the elderly woman's husband and his wish was to be "buried at sea", so to speak. Needless to say some of him made it to the sea and some of him took flight and landed on the Cabriolet to take one last ride in (on) a Model 'A' Ford.

Jan and I had a good laugh as we drove away. Most of Grandpa's ashes blew off before we got home, but Grandpa did get both his last ride in a Model 'A' and a swim in the surf. This turned out to be a memorable afternoon after all. RIP Grandpa. All your final wishes were met.

February Birthdays

3	Don Knott	9	Gloria Younkin
5	Ron Ragon	15	Elaine Pisu
5	Phil Bonneau	18	Liz Dye
5	Laura Pahls	24	Dick Wyckoff
6	Sheree Wright	25	Pamela Giagni
8	Dale Barry	25	Daffy Wagner

February Anniversaries

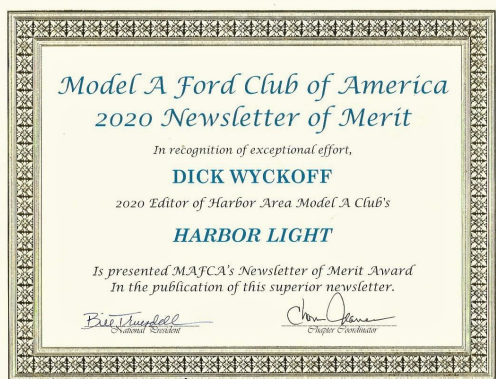
4	Bill & Anne Kealey
14	Jim & Anita Perreten
20	Mike & Sheree Wright



Editor's Corner By Dick Wyckoff

There is not much to report on this time. I know some of us still get the cars out and drive them. Jan and I do this on a regular basis. Not too far but around the local areas. (See picture on front page).

A little follow-up on the article last month about CA drivers licenses. I did as the article said and about two weeks later I got a new drivers license good for five more years (2026). No hassle, no tests. Yeh!



Just got this award from MAFCA for the Harbor Light. Pretty neat, eh? I do enjoy creating the newsletter. We editors exchange newsletters each month and that give each of us some idea or what other clubs do. A great exchange platform.

While I think of it, if any club member has an interesting event to share, send it on to me. Pictures too. This month I dug around for some ideas and found a write up about Art Wagner. Check it out on page 5.

Stay safe out there and drive your model A.



El Segundo sunset



Torrance beach
looking South at
Palos Verdes
Peninsula

Saturday Morning Coffee Gathering is Alive and Well!

If you are looking for a little tire-kicking adventure on **Saturday** mornings between 7 and 9 AM, check out the Caffeine Cruisers at the corner of Artesia Blvd. and Hawthorne, in Torrance, CA. Several of the Harbor Model A club members and other car enthusiasts of all car types meet to talk cars. There are some very nice autos and some nice people there, too!

The address is 17400 Hawthorne Blvd.,
Torrance CA. (at Artesia Blvd.)

Come on by, have a cup of Starbucks, and get your weekend started in true So. California style.



2021 Membership, Roster and Club Merchandise Items

Ruxella and Jim have a selection of new **Club merchandise**. We have hats, shirts, patches, t-shirts and we still have 60th anniversary items for sale at a discount. More to come. The **2020 Harbor phonebooks/rosters** are available. The first booklet is free to members. Additional copies are \$1. They are also available free of charge through e-mail. Club members that don't attend events can request a phonebook/roster by mail. Contact **Ursi Schmidt** at 310-539-5391. Make sure Ursi has your latest info.

Just a note: We regularly update the roster. If you have any address changes, phone number changes or email changes, let Ursi know. Let Dick Wyckoff know, too. He'll put the info in the *Harbor Light*.

104 THE SATURDAY EVENING POST December 19, 1929

You Can Laugh at Blizzards in a Coat Like This



Just call at any one of our **RETAIL SPACES** for a *Hercules Sheepskin*—a better coat, at a price that only the world's largest stores could offer.

Here's a coat that keeps a biting North wind from getting nearer to you. It's made of strong, smooth goat skin, polished soft, water-repellent, wind-proof, and you're made for a good long winter in the snow and even when the mercury is dropping out of sight.

You have the best feature of all good more substantial fabrics, when you wear a *Hercules Sheepskin*. The outside is tough, heavy, resistant, rain-proof and built to stand up to the weather. The sheepskin lining is from thick *Hercules* wool from Australia—a big, warm blanket that shows out the winter wind.

When winter has been a little too close, it's easy to get a little warm. The *Hercules* becomes an occasional armor to break and stand as tight as your coat's seams off. The pockets are strong and warm—about as big as your stomach—double reinforced, unbreakable.

How much more comfortable is this on these cold, possibly to wait for a while. To make them look easy to wear, we have made them in a variety of styles. One is a quarter of a million yards of material, 1000 yards of strong thread and half a million stitches work into them. Only through such painstaking purchases as these can such a price be possible.

Go to the nearest Sears, Roebuck and Co. store and try one on. Feel its warmth and perfect protection. We have every detail of material and workmanship in the very best.

If you drive a car, you'll want a *Hercules* sheepskin coat. Buy it from your nearest Sears, Roebuck and Co. store. If you have a car, you'll want a *Hercules* sheepskin coat. Buy it from your nearest Sears, Roebuck and Co. store.

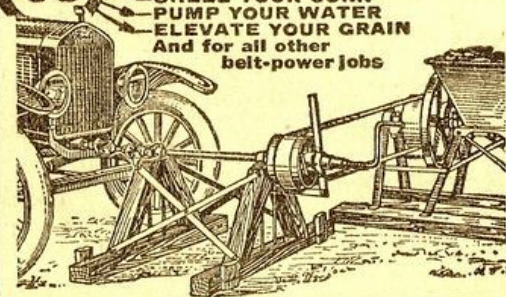
HERCULES SHEEPSKINS \$8.98

SEARS, ROEBUCK AND CO.
RETAIL STORES EVERYWHERE FOR EVERYBODY

Red Hook, N.Y. Chicago Philadelphia Milwaukee St. Louis New York Boston San Francisco San Diego Seattle Tacoma Portland

Use Your Ford to

- SAW YOUR WOOD
- GRIND YOUR FEED
- FILL YOUR SILO
- SHELL YOUR CORN
- PUMP YOUR WATER
- ELEVATE YOUR GRAIN
- And for all other belt-power jobs



Why Buy an Engine When a Low-Priced "WORK-A-FORD"

can be used with your Ford for all belt work? Your Ford has a powerful engine. It will outlast the car and you might as well use it and save your money. No wear on tires or transmission. Just drive up and hook on in three minutes. Friction Clutch Pulley. Governor regulates engine speed. Write for free circular and 10-day trial offer.

WORK-A-FORD CO., 831 Madison Terminal, CHICAGO

HARBOR AREA MODEL 'A' CLUB MEETING

February 2021

Due to the Corona virus situation, the February meeting was cancelled. Folks are encouraged to follow the "Stay at Home" request and keep in contact with other members. We are a family, you know.



"THE KOREAN DREAM" Art Wagner—Redondo Beach, CA

In 1951, I was in the Korean Army and dreamed of building a 1929 Red Roadster - that's what kept me going through the war. I was in the 24th Division, 21 Infantry Fox Company.



When I got back home, I bought a 1929 body from Murphy Tiffany for \$40.00. I bought fenders here and there and bought enough junk until I had enough to build the Roadster. I had a Winfield Model B with a flat head in it, but it wasn't fast enough. Then me and my buddies built a T Bucket with a Miller-Schofield overhead and took it out to Santa Ana and raced it. First time through, it turned 82 and the next time it blew a head gasket. I took it home, fixed the head gasket and then took it out the next weekend and blew an axel.

The next weekend I took it out again and ran a 90.90, made one more run and blew the engine. I got another engine and put it back together, and the next run turned 97.8, but I didn't get the trophy so we decided to build something lighter. So we bought a Model T frame and put the Miller-Schofield in it and a Mercury rear end. We cut the dry end with a hacksaw, and George Ecker welded it together. We went to the oil fields and got a piece of pipe, took a hacksaw and cut it in two, then welded it together to make a row bar. First run through, it dropped the valve and punched a hole in the piston. I brought it home, fixed it up and took it out the next weekend and decided to run "Alki". I put bigger jets in the carburetor and it ran pretty good at 101; but I still didn't get the trophy. The next weekend, I took it out again, had it running good and it turned 107 in 11.310 seconds. I finally got the trophy and got to live out my "Korean Dream."

I still have the 1929 Red Roadster, which I painted bright red in the back yard. I continue to drive it often to the Model A club meetings and around town. I have also won numerous awards for it, including People's Choice. I also have a 1929 Blue Two Door Sedan with a Miller-Schofield and a Weber carburetor.

Technical Talk

Jim's Tech Tip by Jim Cannon

Ford originally used a fine mesh brass screen at the top of the glass fuel strainer bowl that's mounted to the Model A firewall. The bowl gives a place for water to settle into (water is heavier than gasoline) and a place for dirt and rust particles to collect.

The screen also keeps these particles from traveling down to the carburetor (where you have another screen!). With all these screens, I think Ford knew that gasoline supplies at the time were prone to contamination (more than today).



Many people have started to install a small pleated paper filter element in the glass bowl instead of the brass screen.

I'm not so sure it's needed; I think the brass screen is enough. The Model A has no fuel pump, it relies only on gravity feed, and I'm concerned about adding another restriction to the fuel flow.

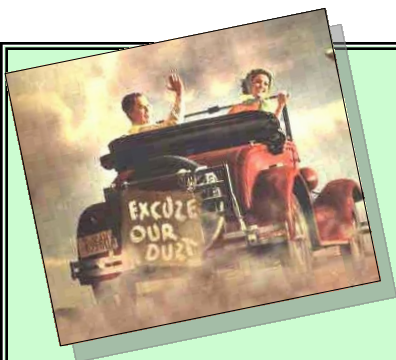
But IF you use one of these paper filters, you need to know that the rust, dirt, etc. is trapped **INSIDE** the paper element, not on the outside of it like you'd think. Therefore, you can be collecting a lot of junk inside the filter, plugging up the filter element on the inside, and not even know it. One day, you lose all your power and the engine really acts like it is starving for fuel. You thought you would see the rust and dirt collect on the outside of the filter... but you don't. Surprise! (I hate surprises!)

So, if you are going to use these pleated paper filters, get into the habit of replacing them regularly, maybe once a year, since you can't see how dirty they are inside. And carry a spare filter and gasket with you in the car. It's a pretty easy thing to swap out in a parking lot. Kind of messy, but it can be done without tools. Use some disposable gloves and you won't smell like gas for the rest of the day.

That's all for now. Keep driving, help each other out, and Have a Model A Day! Jim



Courtesy of MAFCA



Touring with Elaine By Elaine Pisu, Tour Director



Stay Safe. We will get past this. .

Don't have much to offer this month. We don't have any planned activities, but that doesn't mean you can't drive your car! Follow the rules for face masking and socializing and you should be just fine. Again. . . Stay safe .

Also, check out Dick's article on renewing your driver's license. If yours is due soon, this is the way to go. Dick got his renewed for five years! WOW.

Elaine

MODEL "A" RESTORER'S CLUB- HARBOR AREA

LIABILITY RELEASE

User assumes all risk of personal injury and damage to property in use of tools. All tools to remain the property of HARBOR M.A.R.C., and will be returned in 5 (five) consecutive days from the time of check out and in good condition as user (member) will be responsible for damage to tools. A \$20.00 dollar per tool deposit is required and refunded when tools are returned in good condition.

MEMBER _____ DATE _____

AMOUNT RECEIVED, CHECK OR CASH _____

- | | |
|--|--|
| <p>1. <input type="checkbox"/> RATCHET NUT WRENCH</p> <p>2. <input type="checkbox"/> FRAME SPREADER</p> <p>3. <input type="checkbox"/> FRONT SPRING SPREADER</p> <p>4. <input type="checkbox"/> REAR SPRING SPREADER</p> <p>5. <input type="checkbox"/> SPREADER WRENCH</p> <p>6. <input type="checkbox"/> ENGINE LIFTING TOOL</p> <p>7. <input type="checkbox"/> REAR AXLE HOUSING SEAL DRIVER</p> <p>8. <input type="checkbox"/> PINION PULLER</p> <p>9. <input type="checkbox"/> (2) PINION NUT WRENCHES</p> <p>10. <input type="checkbox"/> SHIFT LEVER SPRING COMPRESSOR</p> <p>11. <input type="checkbox"/> STEERING WHEEL PULLER</p> <p>12. <input type="checkbox"/> CAM NUT WRENCH</p> <p>13. <input type="checkbox"/> REAR HUB PULLER</p> <p>14. <input type="checkbox"/> KINGPIN REAMER</p> <p>15. <input type="checkbox"/> BRAKE SHOE RIVETING TOOL</p> <p>16. <input type="checkbox"/> BRAKE PEDAL ADJ. TOOL</p> | <p>17. <input type="checkbox"/> VALVE GUIDE REMOVAL TOOL</p> <p>18. <input type="checkbox"/> GAS GAUGE REMOVAL TOOL</p> <p>19. <input type="checkbox"/> CLUTCH DISC ALIGN TOOL</p> <p>20. <input type="checkbox"/> DISTRIBUTOR PULLER TOOL</p> <p>21. <input type="checkbox"/> JUDGING STANDARDS BOOK</p> <p>22. <input type="checkbox"/> STATIC WHEEL BALANCER</p> <p>23. <input type="checkbox"/> CHAIN FALL HOIST</p> <p>24. <input type="checkbox"/> ENGINE HOIST</p> <p>25. <input type="checkbox"/> DISTRIBUTOR BUSHING REAMER</p> <p>26. <input type="checkbox"/> LIGHT SWITCH SPIDER INSTALL TOOL</p> <p>27. <input type="checkbox"/> ENGINE STUD REMOVAL KIT</p> <p>28. <input type="checkbox"/> DISTRIBUTOR TIMING "Z" WRENCH</p> <p>29. <input type="checkbox"/> VOLTAGE TESTER</p> <p>30. <input type="checkbox"/> IGNITION SPARK TESTER</p> <p>31. <input type="checkbox"/> PILOT BEARING PULLER (2 PIECES)</p> <p>32. <input type="checkbox"/> DOOR HINGE PULLER</p> |
|--|--|

Note: Two new tools have been added to the club's inventory:

1. Engine block flushing block-off plates (Thanks to Rob Hernandez)
2. Cylinder head removal tool (Thanks to Jim Runyon)

____ TOTAL NUMBER OF TOOLS CHECKED OUT

TOOLS RETURNED _____ DATE: _____ CONDITION: _____

DEPOSIT RETURNED _____ DATE: _____



MAFFI Newsletter Minute January 2021



Happy New Year from the Model A Ford Foundation! We are looking forward, as many of you are also, to a better and more active year. Hopefully you have been able to get in your A's and do some driving before the weather makes it impossible. Many clubs have had some "No Contact Tours" which have been nice. We live in a beautiful world and there is no better way to see it than from a Model A! Last year the Museum had to say goodbye to a beautifully restored Woody belonging to Tim Wiggins that had been on loan to the Museum for several years. As luck would have it, a 1931 Woody has just been donated to the museum by Rob Gibby from Pennsylvania. Rob has owned this car since 1963 while he was in school. We hope to have it safely installed in the Museum by February.

Did you know that you can get a tour of the museum right from the comfort of your own home? Go to our website: www.maffi.org and click on the link "Tours". There is a tour that was filmed in September, led by MAFFI President, John Begg and others. It was focusing on the First Responders Display but also gives you an idea of what's inside. You truly have to see it in person to appreciate all that is there. You could spend an entire day if you looked at every exhibit and read everything. We hope to have other short videos coming soon so check back often.

Thank you for your continued support of the Model A Ford Foundation through your membership and your donations.

Thank you,
Marsha Quesnel, MAFFI Trustee
clubcontact@maffi.org



New 1930-31 Dash panel with round speedometer — \$150

Model A pickup bed. Needs wood. Asking \$950

New Pickup tail gate. \$300

Model A flywheel cut and machined for V8 clutch—\$35

Call Paul at 310-218-7266



A note from member Peggy Wishon:

I was looking through my pantry, tossing outdated stuff and realized I had some things with "Use by" dates coming up in the next couple of months that I am sure I won't use under the hibernating situation these days.

I called the **Salvation Army donation center/food bank on Beryl** in Redondo Beach (near Ruby's) and spoke with Mary-Lou who said they heartily welcome any canned/packaged/fresh food donations - whatever items you have. Let her know when you are there and someone will come out to your car to get your donations. They will, of course, take other stuff, too. (Maybe tell them you are from the Model A Club? since MaryLou seemed to know about the Ruby's car events.)

[Redondo Beach Corps - Redondo Beach Corps \(salvationarmy.org\)](http://salvationarmy.org)

Could you please share this with the Club members or get it to the appropriate person to share ?

Thanks,
Peggy



Benefits of National Club Memberships

Membership in **MAFCA** includes the following:

- A one year subscription to The Restorer, our award winning bi-monthly magazine including free classified ads.
- The right to register and participate in all National and Regional MAFCA meets
- Voting privileges in National elections of officers and by-laws revisions
- Free classified advertising on the MAFCA web site and posting of photo of your car in the Photo Album section
- Technical advice to help restore your Model A and keep it in top shape

National **MARC** Membership Includes:

- Six issues each calendar year of our award- winning, international, bi-monthly Model 'A' News magazine.
- Includes detailed technical and Era fashion articles, Model A historical articles, coverage of National Meets and Region News, classified ads, and vendor ads - a great source of information for parts and services.
- From 64 to 72 pages each issue. Excellent quality coated paper with color, and black and white photography.
- FREE 40 word Classified Ad in each issue for club members - buy and sell Model A parts and services to a target audience.



Model A Restorers Club

6721 Merriman Road,
Garden City, Michigan 48135
(734) 427-9050

E-mail: modelarestorers@sbcglobal.net

Website: www.modelaford.org

Dues are \$45.00 per calendar year.

Model A Ford Club of America

250 S. Cypress Street
La Habra, Ca. 90631-5515
(562) 697-2712



E-mail: info@mafca.com

Website: www.mafca.com

Dues are \$50.00 per calendar year.

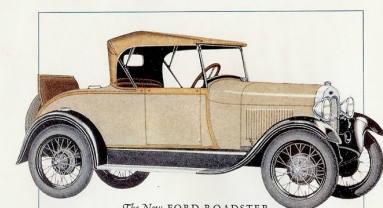
A note from Ursi Schmidt: If you have any (new or used) Christmas or greeting cards you don't need or want, give them to Ursi. She recycles them. Thanks

The Ahooga Origin

by Tom Endy

The ahooga horn, also known as a Klaxon horn was developed and patented by Miller Reese Hutchison, an inventor of the early 20th century. Hutch, as he was known, patented the mechanism in 1908. The Lovell-McConnell Manufacturing Company of Newark, New Jersey bought the rights to manufacture the device and it later became standard equipment on motor cars. Franklyn Hallett Lovell Jr., the company founder, coined the name *klaxon* from the Ancient Greek verb *klazō*, meaning shriek. Klaxon horns produce an easily identifiable sound, often described in English as "ahooga". Like most mechanical horns, the klaxon has largely been replaced by solid-state electronic devices, though the memorable tone has persisted on in classic cars of the era. Klaxon later became a brand name.

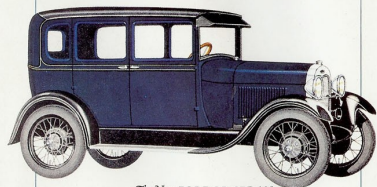
The Klaxon horn was used on U.S. submarines during WWII. The Klaxon horn's characteristic sound is produced by a spring-steel diaphragm with a rivet in the center that is repeatedly struck by the teeth of a rotating cogwheel. The diaphragm is attached to a horn that acts as an acoustic transformer and controls the direction of the sound. In the first Klaxons, the wheel was driven either by hand or by an electric motor. Hutchison went to work for Thomas Edison in 1909, and was the chief engineer for Edison from 1912 to 1918. The ahooga sound is usually heard today when a Model A Ford goes rolling down the road.



The New FORD ROADSTER
A long, low, chunky car. All steel body, of course. Wide doors. Deep cutouts. Rich upholstery. Nickel hardware. Ramble seat optional. Attractive color.



The New TUDOR SEDAN
Long, wide, roomy. Narrow pillars and new door construction give unusual room. Both front seats fold forward, giving easy access to rear seat. Ample space between seats.



The New FORDOR SEDAN
A big, roomy car. Wide seats. Generous leg room, front and rear. Four convenient doors. Unusually large windows. Rich Upholstery. Attractive color.



The New FORD PHAETON
Another long, low, roomy model. All four doors open forward. Curtains open and close with doors. Side curtains have unusually large windows.



SHORPY

Our Advertising Friends

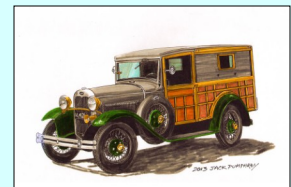
Aquarium of the Pacific
100 Aquarium Way
Long Beach, CA 90802
1-562-590-3100

CW Moss Ford Parts
420 W. Chapman Ave.
Orange, CA 92866
1-800-322-1932

Snyder's Antique Auto
12925 Woodworth Rd.
New Springfield, OH 44443
1-888-262-5712

Comedy & Magic Club
1018 Hermosa Ave.
Hermosa Beach, CA 90254
1-310-372-1193

Performance Plus Tire Superstore
3910 Cherry Ave.
Long Beach, CA 90807
1-562-988-0211



The **Harbor Light** is a monthly publication for the Harbor Area MARC/MAFCA. All articles or want ads must be received by the 15th of each month in order to appear in the following month's publication. Neither the **Harbor Light** and its staff, nor the Harbor Region of the Model A Restorer's Club Inc. and Model A Ford Club of America, Inc. will assume any liability for errors or omissions, or for any liability or resultant damages for products, opinions or services listed herein. Some information contained in our newsletter has been reprinted from other newsletters; we thank and acknowledge them. Editor

Proud printer of the 'Harbor Light'



Edward Su

ed@studioprinting.net
www.studioprinting.net

1750 E. Holly Avenue
El Segundo, CA 90245
PHONE: 310-333-8989
FAX: 310-333-8986
CELL: 310-292-3219

Torrance, CA
**JOEY'S
SMOKIN' BBQ**
www.getmesomebbq.com

25308 Crenshaw Blvd.
Torrance, CA 90505
Email: joeyssmokinbbq@outlook.com

VELLIOS



AUTOMOTIVE MACHINE SHOP

4625 Manhattan Beach Blvd.
Lawndale, CA 90260
(310) 643-8540

NATIONWIDE
REAL ESTATE EXECUTIVES

DIRECT (310) 466-1122
OFFICE (562) 423-8134
EMAIL: JIM.BEARDSLEY@OURNATIONWIDE.COM

LIC # 01976588

NATIONWIDE REAL ESTATE EXECUTIVES
4425 ATLANTIC AVE BLDG C • LONG BEACH, CA 90807

JIM BEARDSLEY
REALTOR®



Lic#496791
**INDUSTRIAL
LOCK and
SECURITY**

COMMERCIAL • RESIDENTIAL • AUTO
LOCKS SERVICED & INSTALLED
KEYS MADE • SAFES • ACCESS CONTROL
BONDED & INSURED

24 hr. EMERGENCY SERVICE
401 Main Street
El Segundo, CA 90245
FAX (310) 322-3627
(310) 322-3252

ELYSE BEARDSLEY

EARLY FORD STORE
of California
www.earlyfordstore.com

Specializing in Rare Parts
and Accessories for
Early Fords 1928/1972
Passenger Car & Pick-Up

Bill McGrath
San Dimas, CA 91773
108 W. Bonita Ave.
Tel: (909) 305-1955
Fax: (909) 305-1953



M B RENTALS

Studio Equipment
Lights and Fixtures



Drain Marshall

Home: (310) 378-5061
Cell: (310) 570-5938

showrooms: palos verdes,
beverly hills, lake arrowhead,
torrance & new york city

tel: 800.293.7826 fax: 888.393.7826
westco@westcoelectrical.com
www.westcosmarthomes.com

WESTCO SMART HOMES

president
jack goldberg, pe

BRATTONS ANTIQUE AUTO PARTS



1606 BACK ACRE CIRCLE
MOUNT AIRY, MD 21771
Order # **800 255-1929**

Web: **brattons.com**

FREE 194 page illustrated MODEL A parts catalog
Catalog contains 3,200 Model A parts with full
descriptions and Picture of each part.

Supplying Quality by using over 90% U.S. parts
Serving the Model A restorer with parts since 1977



Antique Ford Engine Rebuilding

Max Herman

4451 Ramsdell Avenue Tel: (818) 248-2347
La Crescenta, CA 91214 Fax: (818) 248-0161
www.handhantique.com

ARIZONA MODEL A, L.L.C.

- NEW PARTS
- USED PARTS
- SERVICE
- RESTORATION
- HOURS: TUES-FRI 9-12, 1-5
SAT & EVES BY APPOINTMENT



SAMUEL P. GUTHRIE

15838 S. GILBERT RD., CHANDLER, AZ 85225
(480) 782-0266



KAREN'S GIRL TALK

16803 South Prairie Avenue
Lawndale, CA 90260

Phone: (310) 370-2916

All Beauty Services
by Karen

Mike's "A" Ford-able Parts

Mike Butcher



124 Model A Drive, Maysville, GA 30558
email: mike@mikes-afordable.com - www.mikes-afordable.com
Fax: 706 652 2492 - Phone: 706 652 3866
1 888 TRY MIKE (879 6453)



Specialising in 1928 - 1931 Model A Ford Parts

OPEN 7 DAYS

(310) 323-7993
FAX (310) 323-8983



ESTABLISHED 1978

2223 W. Redondo Beach Blvd.
Gardena, CA 90247

CARLO LOMELI

BEACH AREA GARAGE DOOR

www.customgaragedoor.net CA State License 724886
Email: BeachAreaGarageDoor@verizon.net



Sales, Installation, & Service

Jon Mackey
2255 Mira Mar Ave.
Long Beach, CA 90815

(562) 987-0768
(714) 890-5666

TORRANCE TRANSMISSION SERVICE

Drain Marshall says:
Ask about their
Model A
Lube, oil change
Special

ERIC BAILEY

Phone: (310) 378-9217

24009 S. Hawthorne Blvd.
Torrance, CA 90505

CUSTOM
UPHOLSTERY

AMADEUS UPHOLSTERY

CARS • BOATS
CONVERTIBLE
TOPS



Amadeo Montroy
310-542-0726

4610 Manhattan Beach Blvd.
(In rear of building)
Lawndale, CA 90260

**MAGIC
DESIGNS**

Promotional Marketing Solutions
Embroidery & Screenprinting
Uniform Program & Admin.

Magic Designs
1316 Border Ave
Torrance CA 90501
310-880-1945 Direct
310-328-2288 Office
310-328-2228 Fax
munn@magicdesigns.us
www.magicdesigns.us

Munn Ngan
Account Manager



For MARC info and membership, see
www.ModelARestorers.org



For MAFCA info and membership, see
www.MAFCA.com

The Harbor Area A's meet monthly on the last Friday of every month at the Walteria Park Clubhouse, located at 3855 W. 242nd St. in Torrance, California. Meetings begin at 7:30 PM (The park is located about 1-1/2 blocks west of Hawthorne Blvd. and one block south of Pacific Coast Hwy.) We'd like to invite all interested parties, even if they don't own a Model A Ford, to come and join us. Our goal is to educate the public about Model A Fords and have fun while doing it.

2021 Board of Directors:

President:

Wayne Sterling (310) 500-9933

Email: WSTERLING@STERLING-AGENCY.COM

Vice-President:

Dennis Simpson (310) 343-8227

Treasurer:

Daffy Wagner (310) 374-6113

Secretary:

Gloria Younkin (310) 316-8722

Tour Director:

Elaine Pisu (310) 793-1789

Technical Director/Safety:

Cliff LeFall (323) 715-3153

Appointed Officers:

Membership:

Ursula Schmidt (310) 539-5391

Historian: Open

Sunshine Secretary:

Theresa LeFall (323) 715-3153

Advertising:

Jim Huizdos (310) 375-2737

Refreshments Coordinator:

Weeg Thompson (310) 346-6409

Appointed Officers:

Tool Custodian:

Bob De Crescenzo (310) 540-3690

Merchandise:

Ruxella Speights (310) 660-2243

M/Sergeant-at-Arms:

Jack Gordinier (424)-263-2397

Webmaster: Open

Harbor Light Editor:

Dick Wyckoff

Phone: (310) 322-8863 (h)

(310) 292-1929 (c)

E-mail: Janndick@earthlink.net

Era ad about safety glass
in the Model A



From:
Harbor Area Model A Club
Dick Wyckoff, Editor
337 Lomita St.
El Segundo CA 90245

February 2021

The Harbor Light

