



Harbor Area Model 'A' Club

Dedicated to preserving and driving the 1928-1931 Model 'A' Ford since 1957
Torrance, California

May 2021

2016-2019 MARC
Award of Continuing Excellence
for Harbor Light newsletter.
2020 MAFCA
Newsletter of Merit

Cruise At The Beach!
Classic Car Show Cruise Nights
Fridays 3 - 6:30pm
June 18 - Aug. 27, 2021
245 N Harbor Drive
Redondo Beach Marina
MUSIC! RAFFLE! FUN!
FREE PARKING
FOR ALL CRUISERS!
Contact: Darryl Boye
(310) 490-0139
darrylboy@gmail.com

Upcoming Business Meetings

The May 2021 meeting
Postponed until (TBD)

We are working on starting up again. Hopefully things will improve enough to resume activities.

We will keep our members informed if there are any changes to the meeting schedule. Your health and safety is our prime concern.



Technical Activities

We have started up again! Come on by. .

Saturday mornings.
We meet from about 10am to noon to work on Model A projects.
Bring your Model A by and we'll work on it.
Al's Garage, 907 Van Ness, Torrance CA (in the alley)



Model A Events & Local Shows

Cruise at the Beach. Redondo Beach Marina
Friday June 18, 2021, 3-6:30PM.
July 17th—Long Beach Model T Club
Swap Meet. Details on page 10.

Next Board Meeting

May 22nd @ Al's Garage
9:30AM



- 2 Wayne's Words — Note from Pat
- 3 Birthdays/Anniversaries
- 3 Editor's Corner
- 4 Club merchandise—
- 4 Caffeine Cruisers— Hof's Hut
- 5 Business meeting notes (On virus hold)
- 5 New engine pictures

- 6 Tech Tips— Starter 'Bendix'
- 7 Touring with Elaine
- 8 MAFFI News
- 9 For Sale and 2010 tour pics
- 10 Model T Club Swap Meet info
- 11 Our Advertising Friends
- 12 Officer List & Mailing Info



inside

HARBOR LIGHT



Wayne's Words of Wisdom
A Note from our
President
Wayne Sterling



Thoughts for the Future

We are slowly coming out from under the virus lockdown. We have opened up Al's Garage for the motorheads on Saturday morning. (Thanks to Liz Dye). Still some clean-up and organization to be done, but we are making progress. We had our first Board meeting there last Saturday at Al's Garage. Sure was nice to see everyone again. We wore masks for safety reasons.

If anyone has some group activity suggestions, let me know. Maybe we can get our Model As out on the road again!

Hope to see you all soon!

Wayne Sterling, President

A Note from Pat Harrison

Would you put something in the newsletter about the following:

Join us at the Car show at Captain Kids on June 18. We plan on meeting around 3:30-4. A chance to drive your A and see your model A friends. (Dick I just sent the flyer to you for car show—couldn't get it to send with this email).

Some of us are planning for a trip to Solvang, July 16-18. Most of us stay at Svendsgaard's Danish Lodge (805-688-3277). Activities to be determined. If you plan on going, please let Pat Harrison know and make your hotel reservation.

The date, Saturday, September 18, has been selected for our annual club picnic pending approval for reserving the space at the park by the city.

Let me know if you have questions.

Pat Harrison

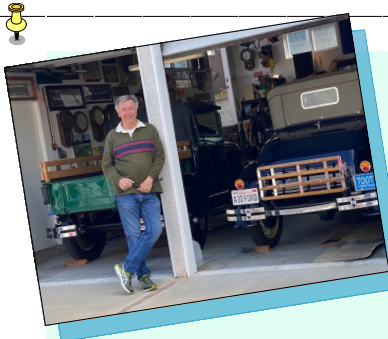


May Birthdays

- | | |
|-----------------|---------------------|
| 1 LeOra Combs | 11 Baylee Migliazzo |
| 4 Leonard Funk | 13 Larry Migliazzo |
| 7 Peggy Hopkins | 15 Peggy Wishon |
| 8 Karen Barry | 19 Steve Friedrich |
| 10 Jim Speights | 19 Pat Tucker |

May Anniversaries

- | |
|---------------------------|
| 4 Wayne & Tomo Sterling |
| 20 Leonard & Darlene Funk |



Editor's Corner By Dick Wyckoff

Well, it is finally happening! The doors to businesses are opening (with some limitations) and we are starting to return to normal (whatever that is!)

We have started up again our Monday evening supper gathering at Hof's Hut in Torrance. We meet a little early, 4pm (per restaurants request). So far

we get about 10-14 people. It's a start. . .

We also had our first Board meeting in over a year. I think we got the ball rolling for some upcoming activities. Car shows, swap meets, annual picnic, etc. Some folks are even going to Solvang! Check with Pat Harrison for more details.

All in all, I think we are coming out of the lockdown and we can get on with our lives.

See you on the road again!

Dick



It's spring time!

Del Amo Street opening, August 2012



Saturday Morning Coffee Gathering is Alive and Well!

If you are looking for a little tire-kicking adventure on **Saturday** mornings between 7 and 9 AM, check out the Caffeine Cruisers at the corner of Artesia Blvd. and Hawthorne, in Torrance, CA. Several of the Harbor Model A club members and other car enthusiasts of all car types meet to talk cars. There are some very nice autos and some nice people there, too!

The address is 17400 Hawthorne Blvd.,
Torrance CA. (at Artesia Blvd.)

Come on by, have a cup of Starbucks, and get your weekend started in true So. California style.



Some vintage iron. . .



Super Bug!

2021 Membership, Roster and Club Merchandise Items

Ruxella and Jim have a selection of new **Club merchandise**. We have hats, shirts, patches, t-shirts and we still have 60th anniversary items for sale at a discount. More to come. The **2021 Harbor phonebooks/rosters** are available. The first booklet is free to members. Additional copies are \$1. They are also available free of charge through e-mail. Club members that don't attend events can request a phonebook/roster by mail. Contact **Ursi Schmidt** at 310-539-5391. Make sure Ursi has your latest info.

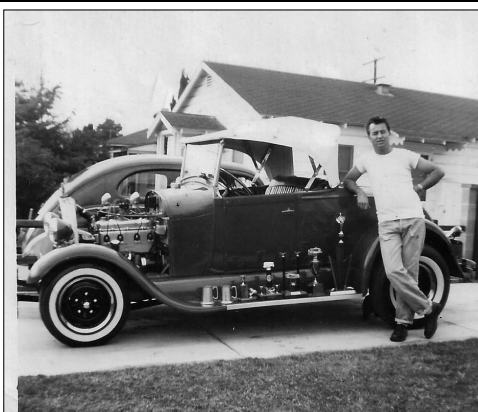
Just a note: We regularly update the roster. If you have any address changes, phone number changes or email changes, let Ursi know. Let Dick Wyckoff know, too. He'll put the info in the *Harbor Light*.

Hof's Hut
RESTAURANT & BAKERY
Est. 1953

Torrance, CA
JOEY'S
SMOKIN' BBQ
www.getmesomebbq.com

Monday Supper at Local Restaurants

We have started meeting again for dinner on Mondays at around 4pm for a couple weeks now. Each week might be a different location in Torrance. Gloria Younkin said to call her for the latest info. Her number is 310-892-1528 ©. Hope to see you there!



Art Wagner
and his '29 Roadster.
Photo taken in the
50's after returning
from Korea
after the war.

I love the smell of
GASOLINE
in the morning

HARBOR AREA MODEL 'A' CLUB MEETING NOTES

March 2021

Due to the Corona virus situation, the February meeting was cancelled. Folks are encouraged to follow the safety guidelines and keep in contact with other members. We are a family, you know.

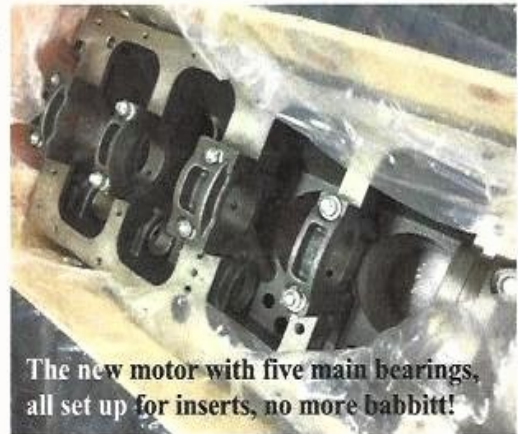


Model A Crate Motor



Arlyn couldn't get the crate open fast enough!

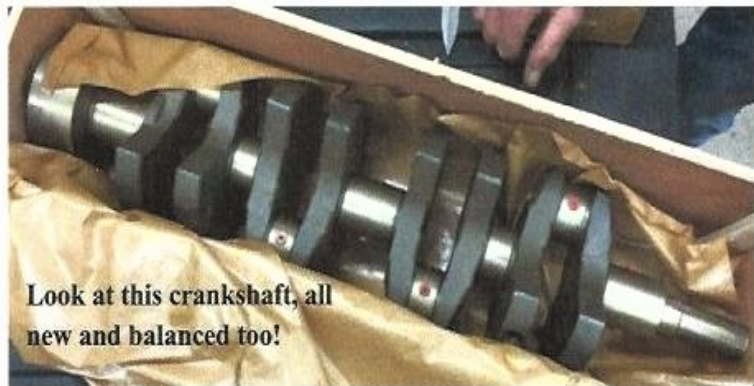
Yesterday the team at Hansen's Garage took delivery of the brand spanking new Model A motors, still in the crate. The newly manufactured block and crank shaft are the result of a multi-year project by Terry Burtz, a dedicated Model A hobbyist. He researched the Ford archives, prepared a number of prototypes and worked with foundries to produce a block that looks like a stock Ford A from the outside, but has internal improvements on Henry's original.



The new motor with five main bearings, all set up for inserts, no more babbitt!



Look, no rust!



Look at this crankshaft, all new and balanced too!

The crack mechanics at Hansen's are suitably impressed with the quality of the castings and the improvements. They are eagerly awaiting the arrival of the lightened flywheel so they can put it through its paces. Many thanks to Clyde Marion and Howard Krugel for arranging the purchase and delivery of the new blocks. Vern Schwebke

Thanks to the San Diego Model A Club's 'Quail Call' for this interesting article.



Jim's technical tip

by Jim Cannon,

Installing the Starter "Bendix Drive"

The small Bendix Drive gear that's bolted to the starter motor puts up with a lot of use (and abuse when you forget to retard the spark before starting). Eventually you will be working on yours and I have a tip for you about installing it back on the starter shaft.

The Bendix is bolted to the shaft with 2 special bolts and lock washers, as shown in the photo below. One bolt has a specially-shaped end that goes down into a hole in the starter shaft. This is critical, to lock the Bendix to the shaft; do not substitute a plain bolt for this.



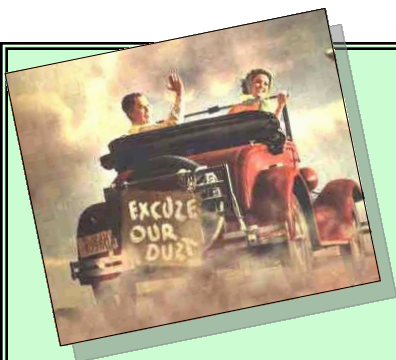
The other bolt is "special" only because it is only 11/16" long. This allows the bolt to lock the spring in place, without having the bolt actually touch the starter shaft. Don't be tempted to use a 3/4" long bolt instead of the correct shorter one. See the comparison photo of a 3/4" bolt and the correct bolt.



When this longer bolt is used, it presses against the starter shaft when tight and it messes up the Bendix operation.

Don't forget to install the half-moon shaped Woodruff key in the shaft before slipping the drive on the shaft. You may also use 2 spring clips (optional). Be sure to lock the bolts down tight by bending the ear of the special lock washer up against the bolt head. If you don't, these bolts will work loose and fly out of the starter drive.

I carry a spare Bendix spring (they are known to break) and a set of these special bolts and lock washers with me in my parts kit on tours. If I don't need them, someone traveling with us might. This will help quickly get them back on the road to Have a Model A Day! Jim



Touring with Elaine By Elaine Pisu, Tour Director



Stay Safe. We will get past this. .

Don't have much to offer this month. We don't have any planned activities, but that doesn't mean you can't drive your car! Follow the rules for face masking and socializing and you should be just fine. Again. . . Stay safe .

Hopefully, most of us got the virus shots. That is a great step forward to beating this thing.

We're working on some Club events. We'll Keep you posted.

Elaine

These are from a book called **Disorder in the American Courts** and are things people actually said in court, word for word, taken down and published by court reporters that had the torment of staying calm while these exchanges were taking place.

ATTORNEY: What was the first thing your husband said to you that morning?

WITNESS: He said, 'Where am I, Cathy?'

ATTORNEY: And why did that upset you?

WITNESS: My name is Susan!

ATTORNEY: What gear were you in at the moment of the impact?

WITNESS: Gucci sweats and Reeboks.

ATTORNEY: What is your date of birth?

WITNESS: July 18th.

ATTORNEY: What year?

WITNESS: Every year.

ATTORNEY: How old is your son, the one living with you?

WITNESS: Thirty-eight or thirty-five, I can't remember which.

ATTORNEY: How long has he lived with you?

WITNESS: Forty-five years.

ATTORNEY: This myasthenia gravis, does it affect your memory at all?

WITNESS: Yes.

ATTORNEY: And in what ways does it affect your memory?

WITNESS: I forget..

ATTORNEY: You forget? Can you give us an example of something you forgot?

ATTORNEY: Now doctor, isn't it true that when a person dies in his sleep, he doesn't know about it until the next morning?

WITNESS: Did you actually pass the bar exam?

ATTORNEY: The youngest son, the 20-year-old, how old is he?

WITNESS: He's 20, much like your IQ.

ATTORNEY: She had three children , right?

WITNESS: Yes.

ATTORNEY: How many were boys?

WITNESS: None.

ATTORNEY: Were there any girls?

WITNESS: Your Honor, I think I need a different attorney. Can I get a new attorney?

ATTORNEY: How was your first marriage terminated?

WITNESS: By death..

ATTORNEY: And by whose death was it terminated?

WITNESS: Take a guess.

ATTORNEY: Can you describe the individual?

WITNESS: He was about medium height and had a beard.

ATTORNEY: Was this a male or a female?

WITNESS: Unless the Circus was in town I'm going with male.

ATTORNEY: Is your appearance here this morning pursuant to a deposition notice which I sent to your attorney?

WITNESS: No, this is how I dress when I go to work.

ATTORNEY: Doctor , how many of your autopsies have you performed on dead people?

WITNESS: All of them. The live ones put up too much of a fight.

ATTORNEY: ALL your responses MUST be oral, OK? What school did you go to?

WITNESS: Oral...

ATTORNEY: Do you recall the time that you examined the body?

WITNESS: The autopsy started around 8:30 PM

ATTORNEY: And Mr. Denton was dead at the time?

WITNESS: If not, he was by the time I finished.

ATTORNEY: Are you qualified to give a urine sample?

WITNESS: Are you qualified to ask that question?

And last:

ATTORNEY: Doctor, before you performed the autopsy, did you check for a pulse?

WITNESS: No.

ATTORNEY: Did you check for blood pressure?

WITNESS: No.

ATTORNEY: Did you check for breathing?

WITNESS: No..

ATTORNEY: So, then it is possible that the patient was alive when you began the autopsy?

WITNESS: No.

ATTORNEY: How can you be so sure, Doctor?

WITNESS: Because his brain was sitting on my desk in a jar.

ATTORNEY: I see, but could the patient

have still been alive, nevertheless?

WITNESS: Yes, it is possible that he could have been alive and practicing law.



MAFFI Newsletter



April 2021

Buy A Brick

One of the ways that you can support the museum is to purchase a brick for the walkways in front of the museum. There are currently 20 spaces left in front of the museum under the gas station canopy but we have prepared another area and will be utilizing it as more orders come in. The cut-off date is June 1st for installation at the museum on the 2021 Model A Day. If you have been thinking about ordering a brick 'In Memory' or 'In Honor' of someone near and dear to you, or if your club/region doesn't have a brick at the museum with its name on it, now would be a great time to do it. Each brick is \$150 and the form can be found at www.maffi.org. Just go to the tab that says Store and go to Just a Brick. There will be an order form for you to download.

Make your Reservations for Model A Day 2021

Our Host Hotel is ready for you to start making your reservations! You can easily do this by going to www.maffi.org. Just go to the tab that says INFO and follow it to the link for Model A Day. The Gilmore is open and running with required Covid Restrictions in place. We hope that you will be excited to come and enjoy our museum as well as the other fun activities, seminars, swap meet and tire-kicking that goes along with any Model A get-together! We look forward to seeing you there on Saturday, September 18th. (If you come a day early, there will be a few seminars on Friday afternoon and evening.)

Thank you,
Marsha Quesnel, MAFFI Trustee
clubcontact@maffi.org





For Sale 1929 Ford Special Coupe. Purchased new in 1929 by current owner's father-in-law. Her deceased husband did a fine point restoration of this mint orig. Model A back in 1957. This car runs and drives like brand new, the interior is letter perfect, the beautiful black lacquer is absolutely stunning, but does have some minor chips from age. A great car to tour with or save for a blue ribbon build in the future. Accessories include B police head, correct era fog lights, Firestone white walls. Missing all 4 shocks, links and arms. Probably removed for restoration at some point and we are unable to find them. Offers around 17k.

Located in Harbor Pines (Palos Verdes).

Call Mike Plessner to set up appointment.

1-424-366-7627

e-mail saxotenor54@aol.com



1929 Model A Closed Cab Pickup
Complete frame off restoration.
Price: \$12,500.



28-29 Sedan fenders. Fiberglass. New.
1 Left front. Call for details. \$50 each

Model A Pickup bed. \$600.

Questions?

Call Paul @ 310-218-7266



Joe and Linda Freitag with Art Wagner

**Harbor Area
Club on tour
of
Old Ridge Route
in October 2010**



Richard and Jeanne Parrish



Art Wagner gassing Al Avoian's sedan

Doris Marshall took a tumble and ended up in Torrance Memorial Hospital for several days. Drain said there were no broken bones. She is home now and is doing OK. See you soon . . .

Update on Greg Earhart

Member Greg Earhart is working through some serious digestive system issues. He has been working with doctors to remove cancers and restoring his ability to take food orally. He has some more tests coming up and a team of doctors preparing to operate in a couple weeks. Keep Greg (and Fran) in you prayers for a safe recovery. We're with you, Greg. Get well . . .

LONG BEACH



MODEL T CLUB, INC.

67th Annual

SWAP MEET

AUTOMOTIVE AND HOBBY RELATED ITEMS ONLY
OLD CAR PARTS, ALL MAKES, ALL MODELS, WELCOME

SATURDAY JULY 17, 2021

7:00AM UNTIL IT'S OVER

Long Beach City College

Veterans Stadium

5000 Lew Davis St. Long Beach, CA.

Enter off Conant St. between Lakewood Bl. and Clark Ave.

\$5.00 ADMISSION

FREE PARKING

SPACES AVAILABLE, 20ft wide 16ft deep

Spaces are \$40, or three for \$100

CALL JEFF HOOD 562-597-5936 or www.lbmtc.com

www.lbmtc.com

Our Advertising Friends

Aquarium of the Pacific

100 Aquarium Way
Long Beach, CA 90802
1-562-590-3100

CW Moss Ford Parts

420 W. Chapman Ave.
Orange, CA 92866
1-800-322-1932

Snyder's Antique Auto

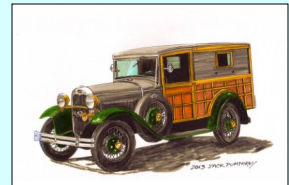
12925 Woodworth Rd.
New Springfield, OH 44443
1-888-262-5712

Comedy & Magic Club

1018 Hermosa Ave.
Hermosa Beach, CA 90254
1-310-372-1193

Performance Plus Tire Superstore

3910 Cherry Ave.
Long Beach, CA 90807
1-562-988-0211



The **Harbor Light** is a monthly publication for the Harbor Area MARC/MAFCA. All articles or want ads must be received by the 15th of each month in order to appear in the following month's publication. Neither the **Harbor Light** and its staff, nor the Harbor Region of the Model A Restorer's Club Inc. and Model A Ford Club of America, Inc. will assume any liability for errors or omissions, or for any liability or resultant damages for products, opinions or services listed herein. Some information contained in our newsletter has been reprinted from other newsletters; we thank and acknowledge them. Editor

Proud printer of the 'Harbor Light'



Edward Su

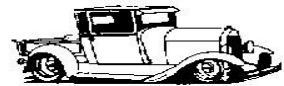
ed@studioprinting.net
www.studioprinting.net

1750 E. Holly Avenue
El Segundo, CA 90245
PHONE: 310-333-8989
FAX: 310-333-8986
CELL: 310-292-3219

Torrance, CA
**JOEY'S
SMOKIN' BBQ**
www.getmesomebbq.com

25308 Crenshaw Blvd.
Torrance, CA 90505
Email: joeyssmokinbbq@outlook.com

VELLIOS



AUTOMOTIVE MACHINE SHOP

4625 Manhattan Beach Blvd.
Lawndale, CA 90260
(310) 643-8540

NATIONWIDE
REAL ESTATE EXECUTIVES

DIRECT (310) 466-1122
OFFICE (562) 423-8134
EMAIL: JIM.BEARDSLEY@OURNATIONWIDE.COM

LIC # 01976588

NATIONWIDE REAL ESTATE EXECUTIVES
4425 ATLANTIC AVE BLDG C • LONG BEACH, CA 90807

JIM BEARDSLEY
REALTOR®



COMMERCIAL • RESIDENTIAL • AUTO
LOCKS SERVICED & INSTALLED
KEYS MADE • SAFES • ACCESS CONTROL
BONDED & INSURED

ELYSE BEARDSLEY

Lic#496791
**INDUSTRIAL
LOCK and
SECURITY**

24 hr. EMERGENCY SERVICE
401 Main Street
El Segundo, CA 90245
FAX (310) 322-3627
(310) 322-3252

EARLY FORD STORE
of California
www.earlyfordstore.com

Specializing in Rare Parts
and Accessories for
Early Fords 1928/1972
Passenger Car & Pick-Up

Bill McGrath
San Dimas, CA 91773
108 W. Bonita Ave.
Tel: (909) 305-1955
Fax: (909) 305-1953



M B RENTALS

Studio Equipment
Lights and Fixtures



Drain Marshall

Home: (310) 378-5061
Cell: (310) 570-5938

showrooms: palos verdes,
beverly hills, lake arrowhead,
torrance & new york city

tel: 800.293.7826 fax: 888.393.7826
westco@westcoelectrical.com
www.westcosmarthomes.com

WESTCO SMART HOMES

president
jack goldberg, pe



Antique Ford Engine Rebuilding

Max Herman

4451 Ramsdell Avenue Tel: (818) 248-2347
La Crescenta, CA 91214 Fax: (818) 248-0161
www.handhantique.com

ARIZONA MODEL A, L.L.C.

- NEW PARTS
- USED PARTS
- SERVICE
- RESTORATION
- HOURS: TUES-FRI 9-12, 1-5
SAT & EVES BY APPOINTMENT



SAMUEL P. GUTHRIE

15838 S. GILBERT RD., CHANDLER, AZ 85225
(480) 782-0266

BRATTONS ANTIQUE AUTO PARTS



1606 BACK ACRE CIRCLE
MOUNT AIRY, MD 21771
Order # **800 255-1929**

Web: **brattons.com**

FREE 194 page illustrated MODEL A parts catalog
Catalog contains 3,200 Model A parts with full
descriptions and Picture of each part.

Supplying Quality by using over 90% U.S. parts
Serving the Model A restorer with parts since 1977



KAREN'S GIRL TALK

16803 South Prairie Avenue
Lawndale, CA 90260

Phone: (310) 370-2916

All Beauty Services
by Karen

Mike's "A" Ford-able Parts

Mike Butcher



124 Model A Drive, Maysville, GA 30558
email: mike@mikes-afordable.com - www.mikes-afordable.com
Fax: 706 652 2492 - Phone: 706 652 3866
1 888 TRY MIKE (879 6453)



Specialising in 1928 - 1931 Model A Ford Parts

OPEN 7 DAYS

(310) 323-7993
FAX (310) 323-8983



ESTABLISHED 1978

2223 W. Redondo Beach Blvd.
Gardena, CA 90247

CARLO LOMELI

BEACH AREA GARAGE DOOR

www.customgaragedoor.net CA State License 724886
Email: BeachAreaGarageDoor@verizon.net



Sales, Installation, & Service

Jon Mackey
2255 Mira Mar Ave.
Long Beach, CA 90815

(562) 987-0768
(714) 890-5666

TORRANCE TRANSMISSION SERVICE

Drain Marshall says:
Ask about their
Model A
Lube, oil change
Special

ERIC BAILEY

Phone: (310) 378-9217

24009 S. Hawthorne Blvd.
Torrance, CA 90505

CUSTOM
UPHOLSTERY

AMADEUS UPHOLSTERY

CARS • BOATS
CONVERTIBLE
TOPS



Amadeo Montroy
310-542-0726

4610 Manhattan Beach Blvd.
(In rear of building)
Lawndale, CA 90260

**MAGIC
DESIGNS**

Promotional Marketing Solutions
Embroidery & Screenprinting
Uniform Program & Admin.

Magic Designs
1316 Border Ave
Torrance CA 90501
310-880-1945 Direct
310-328-2288 Office
310-328-2228 Fax
munn@magicdesigns.us
www.magicdesigns.us

Munn Ngan
Account Manager



For MARC info and membership, see
www.ModelARestorers.org



For MAFA info and membership, see
www.MAFCA.com

The Harbor Area A's meet monthly on the last Friday of every month at the Walteria Park Clubhouse, located at 3855 W. 242nd St. in Torrance, California. Meetings begin at 7:30 PM (The park is located about 1-1/2 blocks west of Hawthorne Blvd. and one block south of Pacific Coast Hwy.) We'd like to invite all interested parties, even if they don't own a Model A Ford, to come and join us. Our goal is to educate the public about Model A Fords and have fun while doing it.

2021 Board of Directors:

President:

Wayne Sterling (310) 500-9933
Email: W Sterling@Sterling-Agency.com

Vice-President:

Dennis Simpson (310) 343-8227

Treasurer:

Daffy Wagner (310) 374-6113

Secretary:

Gloria Younkin (310) 316-8722

Tour Director:

Elaine Pisu (310) 793-1789

Technical Director/Safety:

Cliff LeFall (323) 715-3153

Appointed Officers:

Membership:

Ursula Schmidt (310) 539-5391

Historian: Open

Sunshine Secretary:

Theresa LeFall (323) 715-3153

Advertising:

Jim Huizdos (310) 375-2737

Refreshments Coordinator:

Weeg Thompson (310) 346-6409

Appointed Officers:

Tool Custodian:

Bob De Crescenzo (310) 540-3690

Merchandise:

Ruxella Speights (310) 660-2243

M/Sergeant-at-Arms:

Jack Gordinier (424)-263-2397

Webmaster: Open

Harbor Light Editor:

Dick Wyckoff

Phone: (310) 322-8863 (h)

(310) 292-1929 (c)

E-mail: Janndick@earthlink.net

Photo Op at Torrance Airport 2008



TO:

May 2021

From:
Harbor Area Model A Club
Dick Wyckoff, Editor
337 Lomita St.
El Segundo CA 90245

The Harbor Light

